



February 18, 2016

Robert A. Kaplan
Acting Regional Administrator
U.S. Environmental Protection Agency - Region 5
77 West Jackson Boulevard
Mail Code: R-19J
Chicago, IL 60604-3507

Subject: Designation Recommendation for Brown County, Wisconsin for the 2010 1-Hour Sulfur Dioxide (SO₂) National Ambient Air Quality Standard (NAAQS)

Dear Acting Administrator Kaplan:

This letter is in response to EPA's March 20, 2015 letter to the Wisconsin Department of Natural Resources (WDNR) regarding future rounds of area designations for the 2010 1-hour SO₂ NAAQS. The March 20 letter identified the Green Bay East High (55-009-0005) air quality monitor in Brown County as violating the 2010 1-hour SO₂ NAAQS based on preliminary 2012-2014 data, thereby making the county potentially subject to a nonattainment designation by July 2, 2016 due to a consent decree between the EPA, the Sierra Club, and the Natural Resources Defense Council. EPA provided states the opportunity to submit updated recommendations and supporting information for EPA's consideration for any areas potentially affected by this consent decree.

WDNR certified the 2015 SO₂ data from the Green Bay East High monitor on January 29, 2016. WDNR's evaluation of the certified data from 2013 through 2015 shows that the 2013-2015 design value at the Green Bay East High monitor was in attainment of the 2010 1-hour SO₂ NAAQS. Based on this data and on an analysis conducted in accordance with EPA's March 20, 2015 *Updated Guidance for Area Designations for the 2010 Primary Sulfur Dioxide National Ambient Air Quality Standard*, WDNR recommends that EPA designate the entirety of Brown County as attainment for the 2010 1-hour SO₂ NAAQS as expeditiously as possible.

The following attachments are included with this letter:

- WDNR's Support Document for Sulfur Dioxide Attainment Designation Recommendation for Brown County, Wisconsin.
- Copy of WDNR letter dated January 29, 2016 certifying the 2015 SO₂ data from the Green Bay East High monitor.
- Wisconsin's 2013-2015 SO₂ monitoring data summary for the Green Bay East High monitor.

This is the second time WDNR is making a recommendation of attainment based on monitored data that attains the standard. WDNR previously recommended an attainment designation for Brown County in an April 8, 2013 letter to Regional Administrator Hedman. That request was also based on design values at the Green Bay East High monitor showing attainment of the 2010 1-hour SO₂ NAAQS.

Thank you for the opportunity to provide this information. If you have any questions or require additional information, please contact David Bizot at David.Bizot@wisconsin.gov. WDNR looks forward to your response to this request by March 31, 2016.

Sincerely,

A handwritten signature in cursive script that reads "Gail Good".

Gail Good
Director
Air Management Program

cc: Cathy Stepp, Secretary
Pat Stevens, Administrator, Environmental Management Division
Bart Sponseller, Deputy Administrator, Environmental Management Division
David Bizot, Chief, Regional Pollutant and Mobile Sources Section
Doug Abruano, EPA Region 5
John Summerhays, EPA Region 5

Attachments (3)

Attachment 1:

Support Document for Sulfur Dioxide Attainment Designation Recommendation for Brown County, Wisconsin

BACKGROUND

On June 2, 2010, the U.S. Environmental Protection Agency (EPA) revised the primary National Ambient Air Quality Standard (NAAQS) for sulfur dioxide (SO₂). EPA revoked both the previous 24-hour and annual primary SO₂ standards and established a new 1-hour SO₂ NAAQS at a level of 75 parts per billion (ppb), based on the three-year average of the annual 99th percentile of the 1-hour daily maximum concentrations.

On August 5, 2013, EPA published a notice announcing designations of twenty-nine areas in sixteen states as nonattainment for the 2010 1-hour SO₂ NAAQS, based on certified ambient air quality monitoring data for the years 2009-2011 that showed these areas were violating the standard.

On March 2, 2015, the U.S. District Court for the Northern District of California accepted, as an enforceable order, an agreement between EPA, the Sierra Club, and the Natural Resources Defense Council to resolve litigation concerning the deadline for completing air quality designations for the remainder of the country. The court's order directs EPA to complete the remaining designations in three additional rounds: Round 2 by July 2, 2016, Round 3 by December 31, 2017, and Round 4 by December 31, 2020. EPA will complete these designations by designating areas as either nonattainment, attainment, or unclassifiable.

The court order directed EPA to designate two groups of areas under Round 2 of the designations: (1) areas that have newly monitored violations of the 2010 primary SO₂ NAAQS that were not previously designated during Round 1, and (2) certain large emitters of SO₂. As part of EPA's implementation of this round, WDNR was notified by EPA on March 20, 2015 that the Green Bay East High air quality monitor had recorded a violation of the 2010 1-hour SO₂ NAAQS based on preliminary air quality monitoring data collected between 2012 and 2014. The Brown County area was therefore potentially subject to nonattainment designation under round 2. However, EPA noted that the agency would use the most recent available information when making designations and boundary decisions for these areas.

The most recent available and certified SO₂ data for the Green Bay East High monitor is for the years 2013-2015. Consistent with EPA's March 20, 2015 *Updated Guidance for Area Designations for the 2010 Primary Sulfur Dioxide National Ambient Air Quality Standard* ("SO₂ area designations guidance"), WDNR conducted an analysis of the five factors described in that guidance, which considered the most recent monitoring data. Based on the results of this evaluation, WDNR recommends that Brown County, Wisconsin, be designated attainment for the 2010 1-hour SO₂ NAAQS.

AMBIENT AIR QUALITY DATA

EPA's SO₂ area designations guidance describes how EPA intends to review SO₂ ambient air quality monitoring data, including the design value calculated for each monitor in the area, for the most recent three-year period. Areas where monitoring data indicate a violation of the 1-hour, 75 ppb primary SO₂ standard will be designated as "nonattainment."¹

¹ EPA's March 20, 2015 SO₂ area designations guidance, attachment 2, p. 2.

The only SO₂ monitor in Brown County is located at Green Bay East High School. The Green Bay East High monitor was established in 1980 and meets all design criteria for Wisconsin’s ambient air monitoring network. The monitoring objectives for this site are to determine compliance with two NAAQS, to measure PM_{2.5} and SO₂, and to provide pollutant levels for daily air quality index reporting. For hourly SO₂, this site is source-oriented on a neighborhood scale.

Table 1 presents certified monitored SO₂ concentrations and design values for the Green Bay East High air quality monitor for the years 2010-2015. This data shows that, for the most recent three-year period (2013-2015), the monitor’s design value was 75 ppb. Based on the latest, certified monitoring data, the Brown County area is therefore attaining the 2010 1-hour SO₂ NAAQS. The certified data summary for this monitor for the years 2013-2015 can be found as Attachment 3.

Table 1. 2013-2015 SO₂ monitoring data and design values for the Green Bay East High air quality monitor (all data certified)

Site Name	County	Site ID	99 th Percentile 1-Hour Value (ppb)			2013-2015 Design Value (ppb)
			2013	2014	2015	
Green Bay East High	Brown	550090005	76.1	78.8	68.9	75

EMISSIONS-RELATED DATA

EPA’s SO₂ area designations guidance says that EPA intends to examine actual emissions of SO₂ from sources located in and around the area being characterized. EPA further describes its intention to review data from the latest National Emissions Inventory or other relevant sources of data, such as state emission inventories, when evaluating attainment recommendations.²

In support of the recommendation that Brown County be designated attainment for the 2010 1-hour SO₂ NAAQS, WDNR conducted an inventory of all known SO₂ emissions in the county. Table 2 lists the total SO₂ emissions in Brown County based on 2010-2014 emission inventory data. The eight listed point sources consistently account for over 99% of the total SO₂ emissions in the county. The location of these sources in Brown County, and their relationship to the Green Bay East High monitor, are shown in Figures 1 and 2.

The data in Table 2 shows a 31% reduction in SO₂ emissions in Brown County over the five-year period. These reductions are due to permanent and federally-enforceable actions implemented at these facilities. WDNR expects cumulative SO₂ emissions in this area to continue to decline, due to permanent and enforceable limits and facility conversions either in progress or planned. WDNR can provide EPA more information on estimated future source emissions based on federally-enforceable controls or limits, if requested.

² EPA’s March 20, 2015 SO₂ area designations guidance, attachment 2, p. 2.

Table 2. SO₂ emissions in Brown County (2010-2014)

	2010	2011	2012	2013	2014
FACILITY	SO₂ Emissions (tons)	SO₂ Emissions (tons)	SO₂ Emissions (tons)	SO₂ Emissions (tons)	SO₂ Emissions (tons)
GEORGIA-PACIFIC CONSUMER PRODUCTS LP	13,236.01	12,509.81	12,754.12	12,636.24	10,893.93
WI PUBLIC SERVICE CORP - JP PULLIAM PLANT	5,516.62	3,507.87	1,845.56	2,502.79	2,476.20
EXPERA SPECIALITY SOLUTIONS INC	784.11	711.43	707.56	732.96	794.86
GREEN BAY PACKAGING INC MILL DIVISION	860.29	751.34	382.67	370.72	445.20
FOX RIVER FIBER COMPANY LLC				0.31	17.66
GRAYMONT WESTERN LIME INC	14.59	14.82	14.63	13.00	12.22
GREEN BAY METROPOLITAN SEWERAGE DISTRICT	1.18	1.41	1.42	1.43	3.04
PROCTER & GAMBLE PAPER PRODUCTS CO	799.77	669.05	1.21	1.28	107.09
Total Emissions From Above Point Sources	21,212.57	18,165.74	15,707.17	16,258.73	14,750.20
Total Emissions From All Reporting Sources in Brown County	21,235.96	18,203.20	15,723.66	16,266.54	14,757.67

Figure 1. Brown County, showing the location of point sources of SO₂ emissions

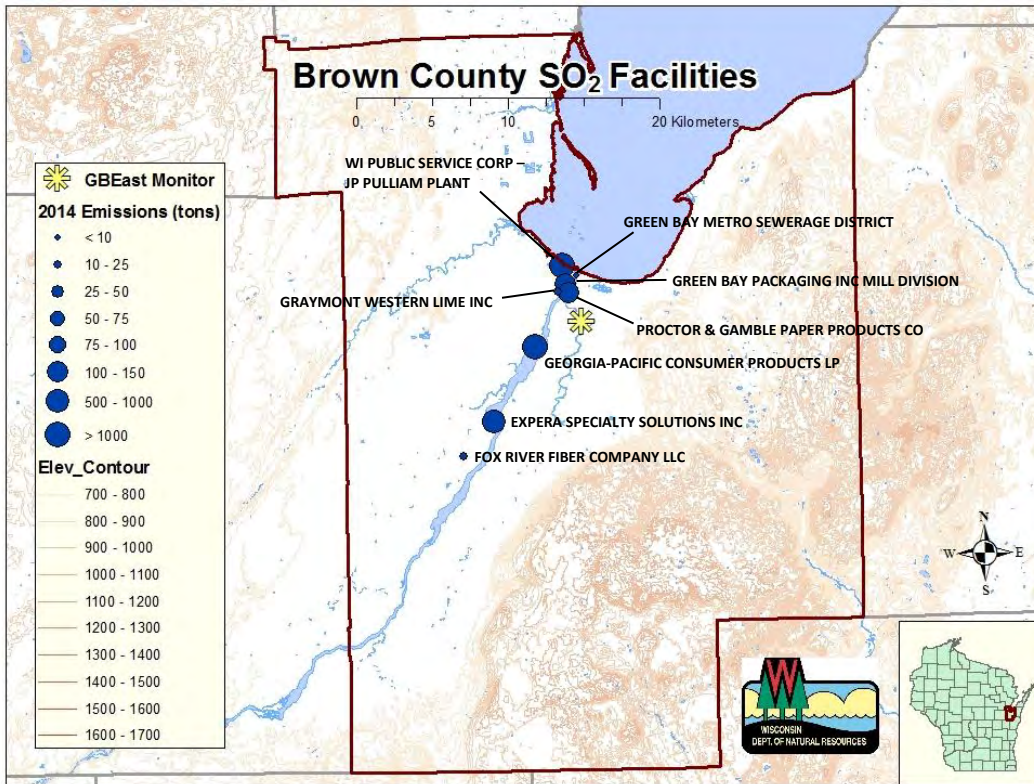
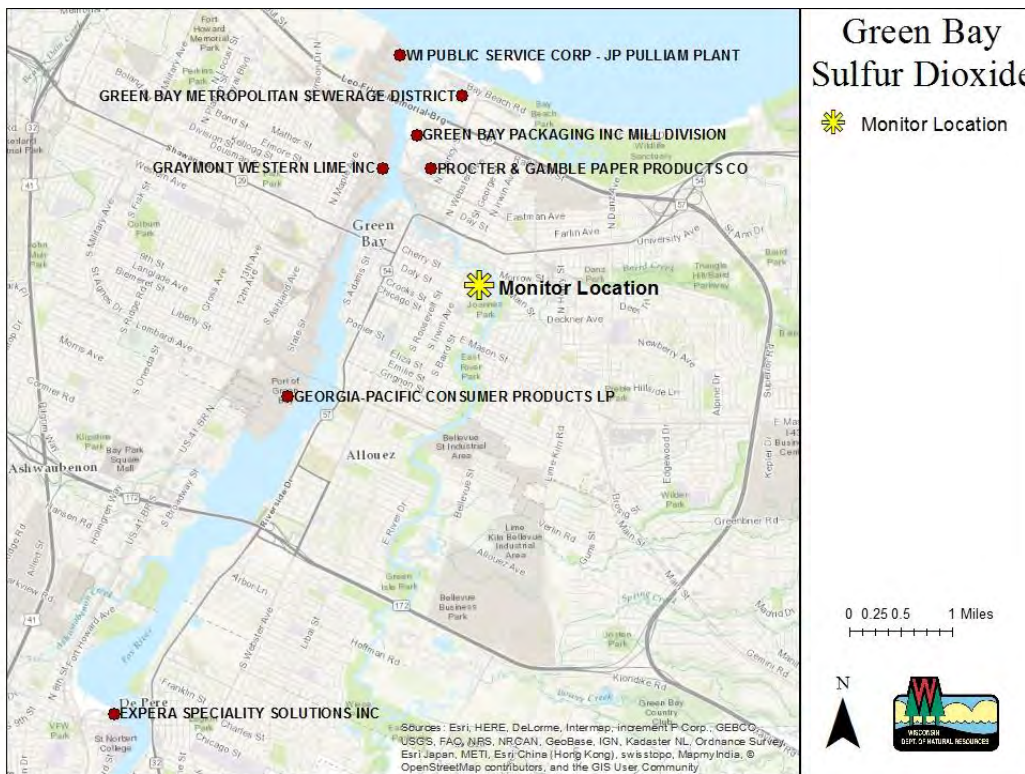


Figure 2. Detailed map showing location of point sources of SO₂ emissions in Green Bay

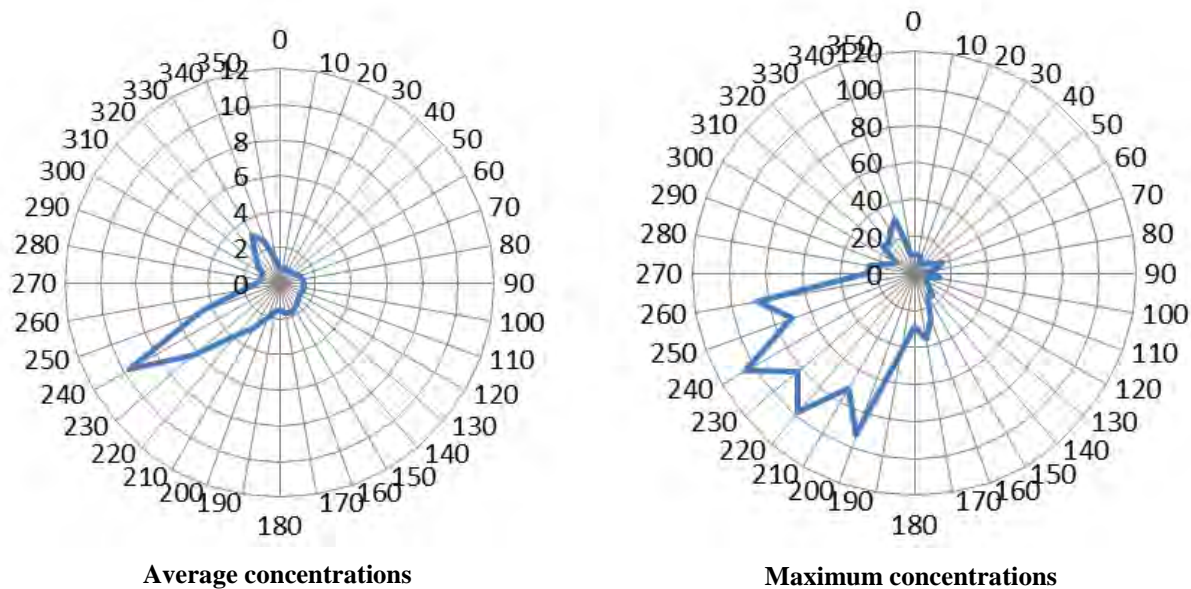


METEOROLOGY

As described by the SO₂ area designations guidance,³ WDNR performed an analysis of meteorological data to help determine how weather conditions, including wind speed and direction, affect the plume of sources contributing to ambient SO₂ concentrations at the Green Bay East High monitor. Minute-reported, two-minute average wind information from Austin Straubel International Airport (KGRB) in Green Bay was obtained from the National Center for Environmental Information.⁴ This data was processed using the EPA program AERMINUTE to produce an hourly average wind speed and direction. Wind direction for each hour was rounded to the tens place.⁵ SO₂ concentrations at the Green Bay East High monitor were then plotted versus wind speed and direction for the years 2012-2015.

The results of this analysis are shown in Figure 3. This figure indicates that both average and maximum SO₂ concentrations at the Green Bay East High monitor location are most heavily influenced when winds are out of the southwest (i.e., 210-250 degrees) and northwest winds also influence concentrations, to a much lesser degree. These wind directions and elevated concentrations are indicative of nearby point sources of SO₂ in Brown County (shown previously in Figures 1 and 2). Further, as shown in Figure 4, the highest monitored concentrations (those above 75 ppb) occur when wind speeds are 2-3 meters per second. WDNR concludes that the Green Bay East High monitor is indicative of SO₂ air quality in Brown County and is properly located to adequately capture SO₂ concentrations resulting from emissions from these point sources, this includes 2013-2015, the years the monitor attained the 2010 1-hour SO₂ NAAQS.

Figure 3. Green Bay East High monitor SO₂ concentrations (ppb) versus wind direction, 2013-2015. Note: Wind direction has an estimated uncertainty of +/- 3%.

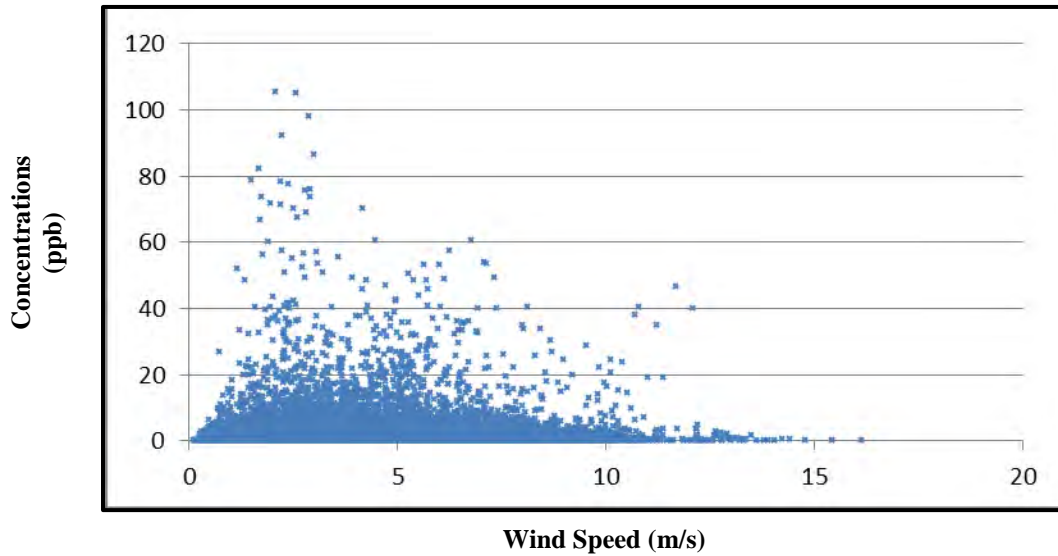


³ EPA’s March 20, 2015 SO₂ area designations guidance, attachment 2, p. 2.

⁴ <ftp://ftp.ncdc.noaa.gov/pub/data/asos-onemin/>

⁵ Wind directions from 355-359 degrees were manually converted to -4.9 to -1 to account for this rounding.

Figure 4. Green Bay East High monitor SO₂ concentrations (ppb) versus speed (m/s), 2013-2015



GEOGRAPHY/TOPOGRAPHY

Brown County does not have any significant topographic features that would influence the distribution of SO₂ concentrations in the county. The City of Green Bay is located in Brown County adjacent to the water body of Green Bay which is part of Lake Michigan. Green Bay is located in northeast Wisconsin, approximately 165 kilometers north of the center of Milwaukee. Terrain in Brown County is generally flat, but features a broad valley that contains the Fox River. The Fox River runs from the southwest portion of the county to the northeast draining into the bay of Green Bay. Terrain in the northwest part of the county is about 100 feet above the elevation of the river. Terrain in the far southeast part of the county is about 200-300 feet above the elevation of the river. The broad nature of this terrain does not lend itself to any micro scale valley circulation. The climate of Green Bay is characterized by variable weather patterns with a large seasonal temperature range and moderate amounts of precipitation.

Green Bay is one of the oldest cities in Wisconsin and contains a mix of industrial, commercial, and residential areas. Following Section 7.2.3(c) of the current *Guideline on Air Quality Models (40 CFR Part 51, Appendix W, November 2005)*, an assessment of the land use in the City of Green Bay finds no portion where more than 50% of the land area within 3 kilometers of Brown County is industrial, commercial, or dense residential; thus, Green Bay is considered rural under the guideline.

JURISDICTIONAL BOUNDARIES

EPA's SO₂ area designations guidance says that county boundaries may be appropriate for defining attainment areas in the absence of any other relevant information that would help define a more specific boundary around the SO₂ sources in question.⁶ Given the location of the Brown County East High monitor and its proximity to the known sources of SO₂ emissions in the county, WDNR recommends that EPA use the jurisdictional boundary of Brown County for the purposes of providing a clearly defined legal boundary for carrying out the air quality planning and enforcement functions for the area.

⁶ EPA's March 20, 2015 SO₂ area designations guidance, attachment 2, p. 6.

DESIGNATION RECOMMENDATION

Based on this analysis, which includes certified monitored data that demonstrates attainment of the standard based on the latest three years of data, WDNR recommends that EPA designate all of Brown County, Wisconsin as **attainment** for the 2010 1-hour SO₂ NAAQS.

This page intentionally left blank

Attachment 2:

**2015 SO₂ data certification letter
for the Green Bay East High monitor**

This page intentionally left blank

State of Wisconsin
DEPARTMENT OF NATURAL RESOURCES
101 S. Webster Street
Box 7921
Madison WI 53707-7921

Scott Walker, Governor
Cathy Stepp, Secretary
Telephone 608-266-2621
FAX 608-267-3579
TTY Access via relay - 711



January 29, 2016

Susan Hedman, Regional Administrator
USEPA Region 5, R19J
77 West Jackson Blvd.
Chicago IL 60604-3507

Subject: Year 2015 Sulfur Dioxide Data Certification for the Green Bay-East High (55-009-0005) Site

Dear Ms. Hedman:

Enclosed you will find an AMP600 Certification and Evaluation Concurrence, AMP251 QA Raw Assessment and AMP256 Data Quality Indicator reports dated January 29, 2016 that summarize the sulfur dioxide data from Wisconsin's Green Bay-East High (55-009-0005) site. The Wisconsin Department of Natural Resources (WDNR)'s Bureau of Air Management used these reports to review the 2015 sulfur dioxide data that was submitted to the US EPA AQS database for this site. This report includes data collected from January 1, 2015 through December 31, 2015.

In compliance with paragraph (c) of 40 CFR 58.15(a), I certify that the ambient air data and quality assurance data submitted by the Wisconsin Department of Natural Resources (Reporting Organization 1175) are submitted completely to AQS and ambient monitoring data are accurate to the best of my knowledge, taking into consideration the quality assurance findings.

Per EPA's request, we are submitting this certification electronically. If you have any questions about this data, please contact Grant Hetherington at (608) 266-1552.

Sincerely,



Gail Good
Director
Bureau of Air Management

Attachments: AMP600 - Certification and Evaluation Concurrence Report
AMP251 - QA Raw Assessment Report
AMP256 - Data Quality Indicator Report

cc: Anthony Ross - USEPA Region 5, Air Monitoring Section (AR-18J) (electronic)
Michael Compher - USEPA Region 5, Air Monitoring Section (AR-18J) (electronic)
Pat Stevens - AD/8 (letter only)
Bart Sponseller - AM/7 (electronic)
Grant Hetherington - AM/7

This page intentionally left blank

Attachment 3:

**SO₂ data summary for the
Green Bay East High monitor
2013 through 2015**

This page intentionally left blank

User ID: AJA

QUICKLOOK CRITERIA PARAMETERS

Report Request ID: 1408453

Report Code: AMP450

Feb. 2, 2016

GEOGRAPHIC SELECTIONS

Tribal Code	State	County	Site	Parameter	POC	City	AQCR	UAR	CBSA	CSA	EPA Region
	55	009									

PROTOCOL SELECTIONS

Parameter Classification	Parameter	Method	Duration
QUICK LOOK	42401		

SELECTED OPTIONS

Option Type	Option Value
WORKFILE DELIMITER	,
MERGE PDF FILES	YES
EVENTS PROCESSING	EXCLUDE REGIONALLY CONCURRED EVENTS
AGENCY ROLE	PQAO

SORT ORDER

Order	Column
1	PARAMETER_CODE
2	STATE_CODE
3	COUNTY_CODE
4	SITE_ID
5	POC
6	DATES
7	EDT_ID

DATE CRITERIA

Start Date	End Date
2013	2015

APPLICABLE STANDARDS

Standard Description
SO2 1-hour 2010
SO2 24-hour 1971
SO2 3-hour 1971
SO2 Annual 1971

UNITED STATES ENVIRONMENTAL PROTECTION AGENCY
AIR QUALITY SYSTEM
QUICK LOOK REPORT (AMP450)

Feb. 2, 2016

EXCEPTIONAL DATA TYPES

EDT	DESCRIPTION
0	NO EVENTS
1	EVENTS EXCLUDED
2	EVENTS INCLUDED
5	EVENTS WITH CONCURRENCE EXCLUDED

Note: The * indicates that the mean does not satisfy summary criteria.

UNITED STATES ENVIRONMENTAL PROTECTION AGENCY
 AIR QUALITY SYSTEM
 QUICK LOOK REPORT (AMP450)

Feb. 2, 2016

Sulfur dioxide (42401)

Wisconsin

Parts per billion (008)

SITE ID	P O C	PQAO	CITY	COUNTY	ADDRESS	YEAR	METH	OBS	COMP QTRS	1ST	2ND	99TH	1ST	2ND	Days	ARITH	CERT	EVAL	EDT
										MAX 1-HR	MAX 1-HR	PCTL 1-HR	MAX 24-HR	MAX 24-HR	>24HR STD	MEAN AN-STD	and		
55-009-0005	1	1175	Green Bay	Brown	EAST HIGH, 1415 E. WALNUT	2013	100	8308	4	105.2	92.1	76.1	14.3	13.1	0	2.40	S	0	
55-009-0005	1	1175	Green Bay	Brown	EAST HIGH, 1415 E. WALNUT	2014	100	8248	4	105.1	98.1	78.8	17.5	16.2	0	2.59	S	0	
55-009-0005	1	1175	Green Bay	Brown	EAST HIGH, 1415 E. WALNUT	2015	100	8294	4	73.8	71.7	68.9	11.0	10.1	0	1.37	S	0	

Note: The * indicates that the mean does not satisfy summary criteria.

UNITED STATES ENVIRONMENTAL PROTECTION AGENCY
AIR QUALITY SYSTEM
QUICK LOOK REPORT (AMP450)
Lead (TSP) LC

Feb. 2, 2016

Note: These reported values do not reflect the combination of 14129 and 85129 and validation substitution tests utilized for Design Value Calculations

UNITED STATES ENVIRONMENTAL PROTECTION AGENCY
AIR QUALITY SYSTEM
QUICK LOOK REPORT (AMP450 END)

Feb. 2, 2016

METHODS USED IN THIS REPORT

PARAMETER	METHOD CODE	COLLECTION METHOD	ANALYSIS METHOD
42401	100	INSTRUMENTAL	ULTRAVIOLET FLUORESCENCE

Note: The * indicates that the mean does not satisfy summary criteria.

UNITED STATES ENVIRONMENTAL PROTECTION AGENCY
AIR QUALITY SYSTEM
QUICK LOOK REPORT (AMP450 END)

Feb. 2, 2016

PQAOS USED IN THIS REPORT

PQAO	AGENCY DESCRIPTION
1175	Wisconsin Dept Of Natural Resources, Air Monitoring Section

Note: The * indicates that the mean does not satisfy summary criteria.

UNITED STATES ENVIRONMENTAL PROTECTION AGENCY
AIR QUALITY SYSTEM
QUICK LOOK REPORT (AMP450 END)

Feb. 2, 2016

CERTIFICATION EVALUATION AND CONCURRENCE FLAG MEANINGS

FLAG	MEANING
M	The monitoring organization has revised data from this monitor since the most recent certification letter received from the state.
N	The certifying agency has submitted the certification letter and required summary reports, but the certifying agency and/or EPA has determined that issues regarding the quality of the ambient concentration data cannot be resolved due to data completeness, the lack of performed quality assurance checks or the results of uncertainty statistics shown in the AMP255 report or the certification and quality assurance report.
S	The certifying agency has submitted the certification letter and required summary reports. A value of "S" conveys no Regional assessment regarding data quality per se. This flag will remain until the Region provides an "N" or "Y" concurrence flag.
U	Uncertified. The certifying agency did not submit a required certification letter and summary reports for this monitor even though the due date has passed, or the state's certification letter specifically did not apply the certification to this monitor.
X	Certification is not required by 40 CFR 58.15 and no conditions apply to be the basis for assigning another flag value
Y	The certifying agency has submitted a certification letter, and EPA has no unresolved reservations about data quality (after reviewing the letter, the attached summary reports, the amount of quality assurance data submitted to AQS, the quality statistics, and the highest reported concentrations).

Note: The * indicates that the mean does not satisfy summary criteria.

User ID: AJA

VIOLATION DAY COUNT REPORT

Report Request ID: 1408463

Report Code: AMP300

Feb. 2, 2016

GEOGRAPHIC SELECTIONS

Tribal Code	State	County	Site	Parameter	POC	City	AQCR	UAR	CBSA	CSA	EPA Region
	55	009									

PROTOCOL SELECTIONS

Parameter Classification	Parameter	Method	Duration
CRITERIA	42401		

SELECTED OPTIONS

Option Type	Option Value
SINGLE EVENT PROCESSING	INCLUDE EVENTS
MERGE PDF FILES	YES
AGENCY ROLE	PQAO

SORT ORDER

Order	Column
1	PARAMETER_CODE
2	DURATION_CODE
3	YEAR
4	STATE_CODE
5	AQS_SITE_ID

DATE CRITERIA

Start Date	End Date
2013 01 01	2015 12 31

APPLICABLE STANDARDS

Standard Description
SO2 1-hour 2010

VIOLATION DAY COUNT REPORT

Feb. 2, 2016

EXCEPTIONAL DATA TYPES

EDT	DESCRIPTION
0	NO EVENTS
1	EVENTS EXCLUDED
2	EVENTS INCLUDED
5	EVENTS WITH CONCURRENCE EXCLUDED

VIOLATION DAY COUNT REPORT

Feb. 2, 2016

Sulfur dioxide (42401)
 Parts per billion (008)
 1 HOUR (1)
 2013
 Wisconsin

CBSA: (24580) Green Bay, WI

SITE ID	POC	COUNTY NAME	DATE OF VIOLATION	MAXIMUM VIOLATION VALUE	EXCEPT DATA?	NUMBER OF PRIMARY VIOLATIONS	NUMBER OF SECONDARY VIOLATIONS	
55-009-0005	1	Brown	2013/05/08	92	0	1		
			2013/06/03	76	0	1		
			2013/07/31	76	0	1		
			2013/08/02	105	0	2		
			2013/08/18	77	0	1		
SUMMARY FOR SITE			55-009-0005	POC	1 YEAR	2013	MAXIMUM VIOLATION VALUE	105
VIOLATION DAYS								5
PRIMARY VIOLATIONS								6
SECONDARY VIOLATIONS								

VIOLATION DAY COUNT REPORT

Feb. 2, 2016

Sulfur dioxide (42401)

Parts per billion (008)

1 HOUR (1)

2014

Wisconsin

CBSA: (24580) Green Bay, WI

SITE ID	POC	COUNTY NAME	DATE OF VIOLATION	MAXIMUM VIOLATION VALUE	EXCEPT DATA?	NUMBER OF PRIMARY VIOLATIONS	NUMBER OF SECONDARY VIOLATIONS	
55-009-0005	1	Brown	2014/05/01	78	0	1		
			2014/05/25	98	0	1		
			2014/07/17	82	0	1		
			2014/07/31	105	0	1		
			2014/08/01	79	0	1		
SUMMARY FOR SITE			55-009-0005	POC	1 YEAR	2014	MAXIMUM VIOLATION VALUE	105
VIOLATION DAYS								5
PRIMARY VIOLATIONS								5
SECONDARY VIOLATIONS								

VIOLATION DAY COUNT REPORT

Feb. 2, 2016

Sulfur dioxide (42401)
 Parts per billion (008)
 1 HOUR (1)
 2013

Wisconsin

DATE OF VIOLATION	HIGHEST VIOLATION SITE	COUNTY NAME	NUMBER OF VIOLATION SITES	MAXIMUM VIOLATION VALUE	EXCEPT DATA?
2013/05/08	55-009-0005	Brown	1	92	0
2013/06/03	55-009-0005	Brown	1	76	0
2013/07/31	55-009-0005	Brown	1	76	0
2013/08/02	55-009-0005	Brown	1	105	0
2013/08/18	55-009-0005	Brown	1	77	0
VIOLATION DAYS	5				

VIOLATION DAY COUNT REPORT

Feb. 2, 2016

Sulfur dioxide (42401)

Parts per billion (008)

1 HOUR (1)

2014

Wisconsin

DATE OF VIOLATION	HIGHEST VIOLATION SITE	COUNTY NAME	NUMBER OF VIOLATION SITES	MAXIMUM VIOLATION VALUE	EXCEPT DATA?
2014/05/01	55-009-0005	Brown	1	78	0
2014/05/25	55-009-0005	Brown	1	98	0
2014/07/17	55-009-0005	Brown	1	82	0
2014/07/31	55-009-0005	Brown	1	105	0
2014/08/01	55-009-0005	Brown	1	79	0
VIOLATION DAYS	5				

User ID: AJA

DATA COMPLETENESS REPORT

Report Request ID: 1408481

Report Code: AMP430

Feb. 2, 2016

GEOGRAPHIC SELECTIONS

Tribal Code	State	County	Site	Parameter	POC	City	AQCR	UAR	CBSA	CSA	EPA Region
	55	009			01						

PROTOCOL SELECTIONS

Parameter Classification	Parameter	Method	Duration
CRITERIA	42401		

SELECTED OPTIONS

Option Type	Option Value
OZONE EVALUATION	SEASONAL-HOURLY
MERGE PDF FILES	YES
AGENCY ROLE	REPORTING

SORT ORDER

Order	Column
1	EPA_REGION
2	STATE_CODE
3	MONITOR_TYPE
4	COUNTY_CODE
5	SITE_ID
6	PARAMETER_CODE
7	POC

DATE CRITERIA

Start Date	End Date
2013 01	2013 12

APPLICABLE STANDARDS

Standard Description
SO2 1-hour 2010

UNITED STATES ENVIRONMENTAL PROTECTION AGENCY
AIR QUALITY SYSTEM
DATA COMPLETENESS REPORT

Feb. 2, 2016

MONITORS NOT REPORTING

UNITED STATES ENVIRONMENTAL PROTECTION AGENCY
 AIR QUALITY SYSTEM
 DATA COMPLETENESS REPORT

Feb. 2, 2016

MONITORS REPORTING

DATE RANGE: JAN. 01, 2013 THRU DEC. 31, 2013
 REGION: (05) CHICAGO
 STATE: Wisconsin

REP ORG: Wisconsin Dept Of Natural Resources, Air Monitoring Section
 MONITOR TYPE: SLAMS

SITE ID	PARAMETER	POC	DURATION METHOD	OBSERVATIONS												YEAR
				NUMBER / PERCENT												
CITY	ADDRESS			JAN	FEB	MAR	APR	MAY	JUN	JUL	AUG	SEP	OCT	NOV	DEC	
55-009-0005	42401 Sulfur dioxide	1	1	709	636	703	685	708	680	704	708	682	701	685	707	8308
Green Bay	EAST HIGH, 1415 E. WALNUT		100	95%	95%	94%	95%	95%	94%	95%	95%	95%	94%	95%	95%	95%

UNITED STATES ENVIRONMENTAL PROTECTION AGENCY
AIR QUALITY SYSTEM
DATA COMPLETENESS REPORT

Feb. 2, 2016

REPORT SUMMARY

DATE RANGE: JAN. 01, 2013 THRU DEC. 31, 2013
REGION: (05) CHICAGO
STATE: Wisconsin
REP ORG: Wisconsin Dept Of Natural Resources, Air Monitoring Section
MONITOR TYPE: SLAMS

PARAMETER	ACTIVE MONITORS	# NOT REPORTING	# MONITORS > 75%	MONITORS AVG COMPLETENESS
42401 Sulfur dioxide	1	0	1	95.0%
MT SUMMARY: SLAMS	1	0	1	95.0%
RO SUMMARY: Wisconsin Dept Of Natural Resources, Air Monit	1	0	1	95.0%
STATE SUMMARY: Wisconsin	1	0	1	95.0%
REGION SUMMARY: (05) CHICAGO	1	0	1	95.0%
REPORT SUMMARY:	1	0	1	95.0%

User ID: AJA

DATA COMPLETENESS REPORT

Report Request ID: 1408483

Report Code: AMP430

Feb. 2, 2016

GEOGRAPHIC SELECTIONS

Tribal Code	State	County	Site	Parameter	POC	City	AQCR	UAR	CBSA	CSA	EPA Region
	55	009			01						

PROTOCOL SELECTIONS

Parameter Classification	Parameter	Method	Duration
CRITERIA	42401		

SELECTED OPTIONS

Option Type	Option Value
OZONE EVALUATION	SEASONAL-HOURLY
MERGE PDF FILES	YES
AGENCY ROLE	REPORTING

SORT ORDER

Order	Column
1	EPA_REGION
2	STATE_CODE
3	MONITOR_TYPE
4	COUNTY_CODE
5	SITE_ID
6	PARAMETER_CODE
7	POC

DATE CRITERIA

Start Date	End Date
2014 01	2014 12

APPLICABLE STANDARDS

Standard Description
SO2 1-hour 2010

UNITED STATES ENVIRONMENTAL PROTECTION AGENCY
AIR QUALITY SYSTEM
DATA COMPLETENESS REPORT

Feb. 2, 2016

MONITORS NOT REPORTING

UNITED STATES ENVIRONMENTAL PROTECTION AGENCY
 AIR QUALITY SYSTEM
 DATA COMPLETENESS REPORT

Feb. 2, 2016

MONITORS REPORTING

DATE RANGE: JAN. 01, 2014 THRU DEC. 31, 2014
 REGION: (05) CHICAGO
 STATE: Wisconsin

REP ORG: Wisconsin Dept Of Natural Resources, Air Monitoring Section
 MONITOR TYPE: SLAMS

SITE ID CITY ADDRESS	PARAMETER	POC	DURATION METHOD	OBSERVATIONS												YEAR
				NUMBER / PERCENT												
				JAN	FEB	MAR	APR	MAY	JUN	JUL	AUG	SEP	OCT	NOV	DEC	
55-009-0005 Green Bay EAST HIGH, 1415 E. WALNUT	42401 Sulfur dioxide	1	1 100	707 95%	637 95%	710 95%	684 95%	703 94%	685 95%	708 95%	683 92%	686 95%	702 94%	636 88%	707 95%	8248 94%

UNITED STATES ENVIRONMENTAL PROTECTION AGENCY
 AIR QUALITY SYSTEM
 DATA COMPLETENESS REPORT

Feb. 2, 2016

REPORT SUMMARY

DATE RANGE: JAN. 01, 2014 THRU DEC. 31, 2014
 REGION: (05) CHICAGO
 STATE: Wisconsin
 REP ORG: Wisconsin Dept Of Natural Resources, Air Monitoring Section
 MONITOR TYPE: SLAMS

PARAMETER	ACTIVE MONITORS	# NOT REPORTING	# MONITORS > 75%	MONITORS AVG COMPLETENESS
42401 Sulfur dioxide	1	0	1	94.0%
MT SUMMARY: SLAMS	1	0	1	94.0%
RO SUMMARY: Wisconsin Dept Of Natural Resources, Air Monit	1	0	1	94.0%
STATE SUMMARY: Wisconsin	1	0	1	94.0%
REGION SUMMARY: (05) CHICAGO	1	0	1	94.0%
REPORT SUMMARY:	1	0	1	94.0%

User ID: AJA

DATA COMPLETENESS REPORT

Report Request ID: 1408484

Report Code: AMP430

Feb. 2, 2016

GEOGRAPHIC SELECTIONS

Tribal Code	State	County	Site	Parameter	POC	City	AQCR	UAR	CBSA	CSA	EPA Region
	55	009			01						

PROTOCOL SELECTIONS

Parameter Classification	Parameter	Method	Duration
CRITERIA	42401		

SELECTED OPTIONS

Option Type	Option Value
MERGE PDF FILES	YES
AGENCY ROLE	REPORTING
OZONE EVALUATION	SEASONAL-HOURLY

SORT ORDER

Order	Column
1	EPA_REGION
2	STATE_CODE
3	MONITOR_TYPE
4	COUNTY_CODE
5	SITE_ID
6	PARAMETER_CODE
7	POC

DATE CRITERIA

Start Date	End Date
2015 01	2015 12

APPLICABLE STANDARDS

Standard Description
SO2 1-hour 2010

UNITED STATES ENVIRONMENTAL PROTECTION AGENCY
AIR QUALITY SYSTEM
DATA COMPLETENESS REPORT

Feb. 2, 2016

MONITORS NOT REPORTING

UNITED STATES ENVIRONMENTAL PROTECTION AGENCY
 AIR QUALITY SYSTEM
 DATA COMPLETENESS REPORT

Feb. 2, 2016

MONITORS REPORTING

DATE RANGE: JAN. 01, 2015 THRU DEC. 31, 2015
 REGION: (05) CHICAGO
 STATE: Wisconsin

REP ORG: Wisconsin Dept Of Natural Resources, Air Monitoring Section
 MONITOR TYPE: SLAMS

SITE ID CITY ADDRESS	PARAMETER	POC	DURATION METHOD	OBSERVATIONS												YEAR
				NUMBER / PERCENT												
				JAN	FEB	MAR	APR	MAY	JUN	JUL	AUG	SEP	OCT	NOV	DEC	
55-009-0005 Green Bay EAST HIGH, 1415 E. WALNUT	42401 Sulfur dioxide	1	1 100	708 95%	641 95%	687 92%	677 94%	709 95%	675 94%	705 95%	709 95%	683 95%	706 95%	684 95%	710 95%	8294 95%

UNITED STATES ENVIRONMENTAL PROTECTION AGENCY
 AIR QUALITY SYSTEM
 DATA COMPLETENESS REPORT

Feb. 2, 2016

REPORT SUMMARY

DATE RANGE: JAN. 01, 2015 THRU DEC. 31, 2015
 REGION: (05) CHICAGO
 STATE: Wisconsin
 REP ORG: Wisconsin Dept Of Natural Resources, Air Monitoring Section
 MONITOR TYPE: SLAMS

PARAMETER	ACTIVE MONITORS	# NOT REPORTING	# MONITORS > 75%	MONITORS AVG COMPLETENESS
42401 Sulfur dioxide	1	0	1	95.0%
MT SUMMARY: SLAMS	1	0	1	95.0%
RO SUMMARY: Wisconsin Dept Of Natural Resources, Air Monit	1	0	1	95.0%
STATE SUMMARY: Wisconsin	1	0	1	95.0%
REGION SUMMARY: (05) CHICAGO	1	0	1	95.0%
REPORT SUMMARY:	1	0	1	95.0%

User ID: AJA

MAXIMUM VALUES REPORT

Report Request ID: 1408491

Report Code: AMP440

Feb. 2, 2016

GEOGRAPHIC SELECTIONS

Tribal Code	State	County	Site	Parameter	POC	City	AQCR	UAR	CBSA	CSA	EPA Region
	55	009			01						

PROTOCOL SELECTIONS

Parameter Classification	Parameter	Method	Duration
CRITERIA	42401		

SELECTED OPTIONS

Option Type	Option Value
MERGE PDF FILES	YES
EVENTS PROCESSING	REPORT ALL EVENT RECORDS
AGENCY ROLE	PQAO

SORT ORDER

Order	Column
1	PARAMETER_CODE
2	STATE_CODE
3	DURATION_CODE
4	DATES
5	COUNTY_CODE
6	SITE_ID
7	POC
8	EDT_ID

DATE CRITERIA

Start Date	End Date
2013	2015

APPLICABLE STANDARDS

Standard Description
SO2 1-hour 2010

EXCEPTIONAL DATA TYPES

EDT	DESCRIPTION
0	NO EVENTS
1	EVENTS EXCLUDED
2	EVENTS INCLUDED
5	EVENTS WITH CONCURRENCE EXCLUDED

UNITED STATES ENVIRONMENTAL PROTECTION AGENCY
 AIR QUALITY SUBSYSTEM
 MAXIMUM VALUES REPORT

Feb. 2, 2016

Sulfur dioxide (42401)

State: Wisconsin
 Duration: 1 HOUR
 Year: 2013

Primary: 75
 Secondary:
 Unit: Parts per billion

Maximum Values

Site ID	POC	County Name	Methods	1st Max	2nd Max	3rd Max	4th Max	5th Max	Num	Num	EDT
		City Name		6th Max	7th Max	8th Max	9th Max	10th Max	Obs	Exc	ID
55-009-0005	1	Brown	100	105.2	92.1	77.4	76.1	75.5	8308	5	0
		Green Bay		08/02:08	05/08:09	08/18:09	07/31:08	06/03:08			
				67.3	57.1	53.9	53.0	52.0			
				07/16:08	09/29:10	01/16:11	01/04:04	08/11:09			

Sulfur dioxide (42401)

State: Wisconsin
 Duration: 1 HOUR
 Year: 2014

Primary: 75
 Secondary:
 Unit: Parts per billion

Maximum Values

Site ID	POC	County Name	Methods	1st Max	2nd Max	3rd Max	4th Max	5th Max	Num	Num	EDT
		City Name		6th Max	7th Max	8th Max	9th Max	10th Max	Obs	Exc	ID
55-009-0005	1	Brown	100	105.1	98.1	82.2	78.8	78.3	8248	5	0
		Green Bay		07/31:09	05/25:08	07/17:09	08/01:09	05/01:09			
				70.1	70.0	60.4	57.2	56.8			
				08/06:08	03/03:11	11/16:22	08/03:09	09/17:08			

Sulfur dioxide (42401)

State: Wisconsin
 Duration: 1 HOUR
 Year: 2015

Primary: 75
 Secondary:
 Unit: Parts per billion

Maximum Values

Site ID	POC	County Name	Methods	1st Max	2nd Max	3rd Max	4th Max	5th Max	Num	Num	EDT
		City Name		6th Max	7th Max	8th Max	9th Max	10th Max	Obs	Exc	ID
55-009-0005	1	Brown	100	73.8	71.7	71.4	68.9	60.6	8294	0	0
		Green Bay		03/31:11	05/01:08	05/28:08	02/16:10	05/27:02			
				57.4	55.2	53.1	49.3	38.7			
				01/01:03	06/24:08	10/29:03	03/25:13	11/01:04			