

COMPLETED PUBLIC FOREST TIMBER SALES CY1995-2021

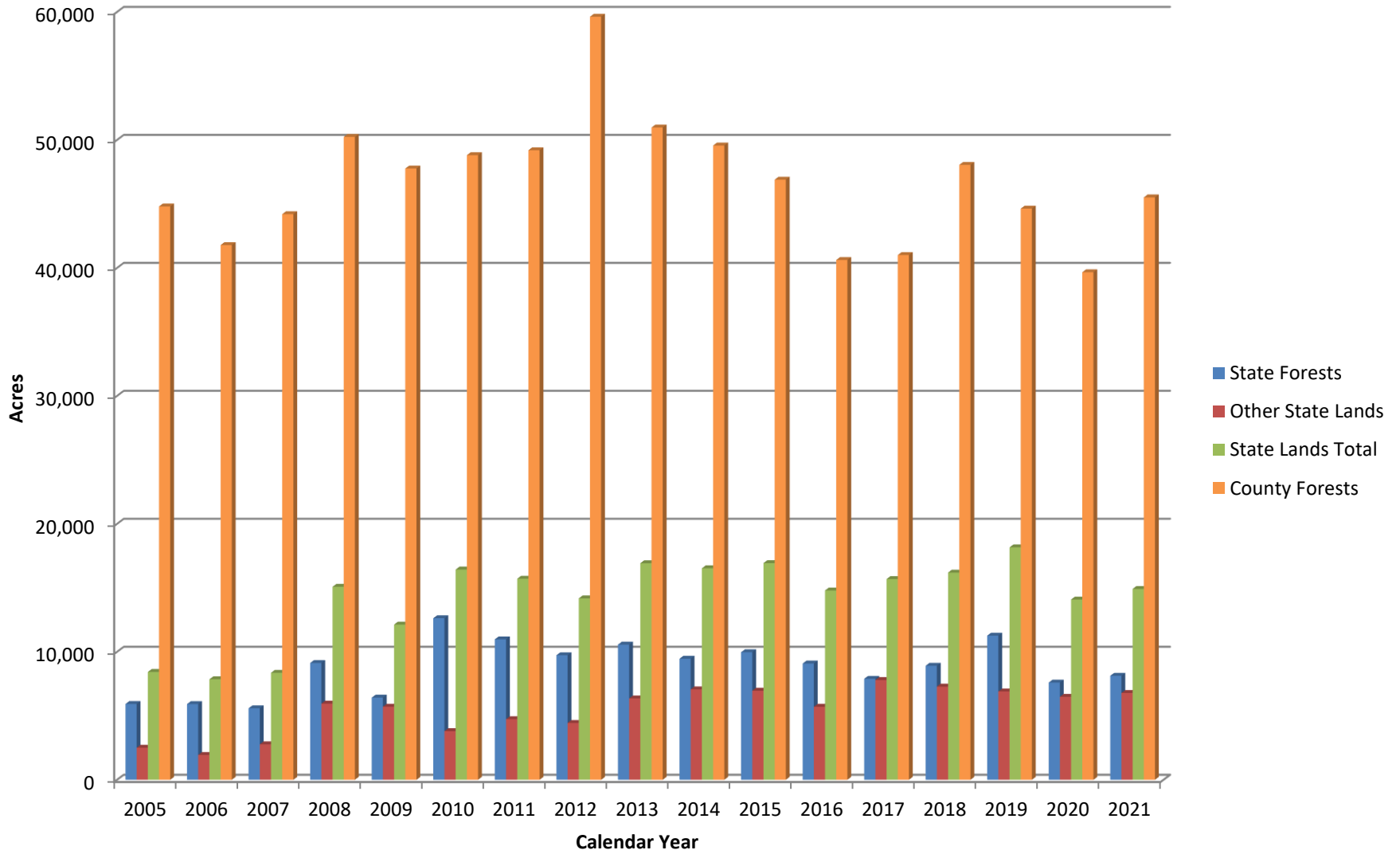
COUNTY FORESTS									
Rpt. 28B Completed Sales									
Year	# of Sales	Acres	\$ Stumpage	MBF	Cords	Cd. Equiv.	Avg. \$/ Cd Eq.	Avg. \$/Acre	
1995	1066	54,022	\$10,495,187	16,450	799,372	838,726	\$ 12.51	\$ 194.28	
1996	889	44,025	\$11,262,245	9,622	712,457	735,775	\$ 15.31	\$ 255.81	
1997	863	44,411	\$13,444,619	11,920	689,692	719,817	\$ 18.68	\$ 302.73	
1998	666	36,388	\$11,824,737	8,732	543,798	565,156	\$ 20.92	\$ 324.96	
1999	835	43,721	\$15,431,106	13,036	662,224	694,693	\$ 22.21	\$ 352.94	
2000	812	42,234	\$16,550,136	12,040	618,446	647,723	\$ 25.55	\$ 391.87	
2001	752	40,543	\$16,047,381	13,394	611,022	642,671	\$ 24.97	\$ 395.81	
2002	778	41,235	\$17,976,414	11,852	614,645	642,142	\$ 27.99	\$ 435.95	
2003	824	48,225	\$21,270,916	13,700	696,396	728,975	\$ 29.18	\$ 441.08	
2004	804	44,943	\$21,496,219	15,858	693,613	730,027	\$ 29.45	\$ 478.30	
2005	758	44,800	\$23,583,189	17,539	689,054	732,417	\$ 32.20	\$ 526.41	
2006	687	41,779	\$24,901,256	15,169	640,953	677,349	\$ 36.76	\$ 596.02	
2007	751	44,199	\$27,227,721	19,454	652,900	700,928	\$ 38.85	\$ 616.03	
2008	808	50,238	\$30,355,825	17,273	787,719	829,431	\$ 36.60	\$ 604.24	
2009	793	47,765	\$30,287,089	17,509	797,521	852,657	\$ 35.52	\$ 634.09	
2010	800	48,808	\$29,643,054	17,292	796,119	834,916	\$ 35.50	\$ 607.34	
2011	743	49,193	\$30,199,644	17,609	800,913	840,079	\$ 35.95	\$ 613.90	
2012	798	59,624	\$37,092,403	20,043	968,472	1,013,008	\$ 36.62	\$ 622.11	
2013	713	50,971	\$31,711,009	19,591	791,686	835,188	\$ 37.97	\$ 622.14	
2014	727	49,563	\$35,680,651	20,998	814,137	860,884	\$ 41.45	\$ 719.90	
2015	654	46,894	\$40,342,248	19,109	831,182	873,710	\$ 46.17	\$ 860.29	
2016	615	40,616	\$39,383,277	21,845	695,279	743,787	\$ 52.95	\$ 969.65	
2017	585	41,003	\$38,227,565	18,332	675,960	716,560	\$ 53.35	\$ 932.31	
2018	654	48,051	\$46,071,734	28,557	835,245	898,554	\$ 51.27	\$ 958.81	
2019	697	44,631	\$44,554,104	26,038	853,205	910,932	\$ 48.91	\$ 998.28	
2020	507	39,662	\$33,694,048	21,920	741,080	789,459	\$ 42.68	\$ 849.53	
2021	664	45,508	\$44,628,457	30,156	871,360	938,122	\$ 47.57	\$ 980.67	
Totals	20,243	1,233,052	\$43,382,234	475,038	19,884,451	20,993,687			
Ave.	749.7	45,669	\$27,532,675	17,594	736,461	777,544	34.7	603.2	

STATE FORESTS									
Rpt. 28B Completed Sales									
Year	# of Sales	Acres	\$ Stumpage	MBF	Cords	Cd. Equiv.	Avg. \$/ Cd Eq.	Avg. \$/Acre	
1995	111	10,364	\$2,367,918	2,470	170,676	177,210	\$ 13.36	\$ 228.48	
1996	89	8,114	\$2,099,306	2,427	128,179	135,178	\$ 15.53	\$ 258.73	
1997	77	5,979	\$1,987,151	951	94,305	97,085	\$ 20.47	\$ 332.36	
1998	66	5,806	\$2,719,765	1,203	90,367	93,513	\$ 29.08	\$ 468.44	
1999	67	4,383	\$1,617,435	927	67,235	70,813	\$ 22.84	\$ 369.02	
2000	77	4,912	\$2,212,708	1,063	66,526	69,323	\$ 31.92	\$ 450.47	
2001	120	8,336	\$4,332,195	4,817	123,821	135,554	\$ 31.96	\$ 519.70	
2002	113	6,318	\$3,325,968	2,870	92,076	99,476	\$ 33.43	\$ 526.43	
2003	74	5,274	\$3,062,599	4,106	81,621	91,504	\$ 33.47	\$ 580.70	
2004	63	4,437	\$2,584,769	4,118	69,844	79,455	\$ 32.53	\$ 582.55	
2005	91	5,925	\$3,980,353	2,172	107,135	112,523	\$ 35.37	\$ 671.79	
2006	65	5,918	\$4,479,904	1,596	97,259	101,665	\$ 44.07	\$ 757.00	
2007	63	5,590	\$3,714,148	2,181	88,735	95,740	\$ 38.79	\$ 664.43	
2008	97	9,130	\$6,068,549	4,464	137,694	150,736	\$ 40.26	\$ 664.88	
2009	82	6,422	\$3,497,586	2,583	104,586	113,107	\$ 30.92	\$ 544.63	
2010	105	12,628	\$8,606,554	5,532	224,176	236,824	\$ 36.34	\$ 681.55	
2011	98	10,974	\$7,358,062	3,704	186,993	195,455	\$ 37.65	\$ 670.50	
2012	93	9,734	\$6,157,909	2,510	147,326	152,970	\$ 40.26	\$ 632.62	
2013	100	10,565	\$6,763,177	4,470	158,614	168,803	\$ 40.07	\$ 640.15	
2014	103	9,460	\$6,246,162	1,470	151,214	154,503	\$ 40.43	\$ 660.27	
2015	104	9,971	\$7,434,265	2,689	164,085	170,085	\$ 43.71	\$ 745.59	
2016	101	9,087	\$7,166,709	2,915	152,442	158,940	\$ 45.09	\$ 788.68	
2017	95	7,890	\$6,276,365	3,191	129,757	137,174	\$ 45.75	\$ 795.48	
2018	83	8,910	\$6,719,229	2,242	140,585	145,581	\$ 46.15	\$ 754.12	
2019	101	11,261	\$7,606,297	3,439	185,867	193,515	\$ 39.31	\$ 675.45	
2020	81	7,599	\$5,934,004	2,140	130,452	135,205	\$ 43.89	\$ 780.89	
2021	92	8,130	\$7,082,568	3,000	147,572	154,204	\$ 45.93	\$ 871.16	
Totals	2,411	213,117	\$13,401,655	75,251	3,439,141	3,626,141			
Ave.	89	7,893	\$4,866,728	2,787	127,376	134,302	35.50	604.29	

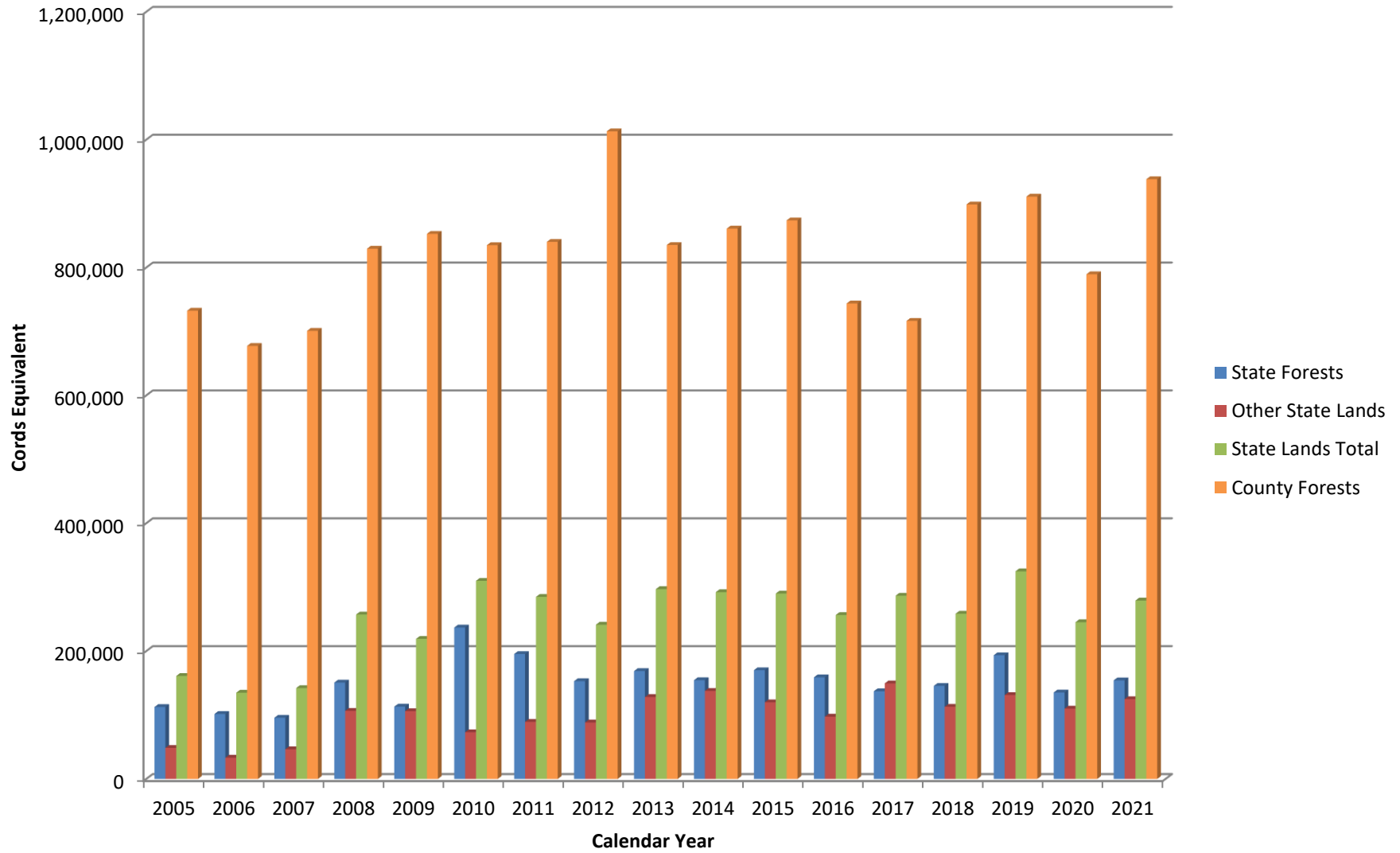
OTHER STATE LANDS									
Rpt. 28B Completed Sales									
Year	# of Sales	Acres	\$ Stumpage	MBF	Cords	Cd. Equiv.	Avg. \$/ Cd Eq.	Avg. \$/Acre	
1995	104	2,899	\$622,109	937	44,262	46,385	\$ 13.41	\$ 214.59	
1996	95	3,485	\$659,703	1,753	47,954	51,965	\$ 18.48	\$ 275.00	
1997	99	2,990	\$1,012,765	765	48,108	49,824	\$ 20.33	\$ 338.72	
1998	73	1,864	\$667,432	471	32,080	33,166	\$ 20.12	\$ 358.06	
1999	95	2,676	\$1,015,789	1,147	39,403	42,024	\$ 24.17	\$ 379.59	
2000	89	3,077	\$1,200,219	3,144	42,329	49,621	\$ 24.19	\$ 390.06	
2001	78	2,683	\$1,256,018	1,103	45,655	48,096	\$ 26.11	\$ 468.14	
2002	57	2,167	\$1,140,196	552	36,906	38,183	\$ 29.86	\$ 526.16	
2003	92	3,056	\$1,571,949	910	56,687	58,784	\$ 26.74	\$ 514.38	
2004	63	2,568	\$1,208,547	795	42,555	44,353	\$ 27.25	\$ 470.62	
2005	67	2,506	\$1,388,655	1,060	46,258	48,596	\$ 28.58	\$ 554.13	
2006	58	1,940	\$1,126,435	1,325	29,931	33,243	\$ 33.88	\$ 580.64	
2007	69	2,772	\$1,731,410	943	44,305	46,427	\$ 37.29	\$ 624.61	
2008	128	5,953	\$3,550,621	1,860	102,315	106,474	\$ 33.35	\$ 596.44	
2009	154	5,709	\$3,126,522	2,641	100,297	106,016	\$ 29.49	\$ 547.65	
2010	93	3,804	\$2,189,607	1,767	69,116	73,062	\$ 29.97	\$ 575.61	
2011	117	4,738	\$2,923,693	1,928	85,035	89,330	\$ 32.73	\$ 617.07	
2012	97	4,443	\$2,566,562	2,059	83,787	88,347	\$ 29.05	\$ 577.66	
2013	142	6,360	\$3,878,254	2,188	123,282	128,156	\$ 30.26	\$ 609.79	
2014	131	7,070	\$4,836,208	2,942	131,150	137,676	\$ 35.13	\$ 684.05	
2015	136	6,960	\$4,172,200	4,558	109,706	119,936	\$ 34.79	\$ 599.45	
2016	125	5,707	\$3,878,130	2,332	92,343	97,495	\$ 39.78	\$ 679.54	
2017	141	7,797	\$5,987,687	4,600	139,126	149,434	\$ 40.07	\$ 767.95	
2018	120	7,281	\$4,230,142	3,450	105,286	112,912	\$ 37.46	\$ 580.98	
2019	125	6,904	\$5,273,393	2,585	125,561	131,257	\$ 40.18	\$ 763.82	
2020	125	6,487	\$3,262,041	4,028	101,066	109,980	\$ 29.66	\$ 502.86	
2021	118	6,785	\$4,513,643	4,792	114,232	124,830	\$ 36.16	\$ 665.24	
Totals	2,791	120,681	\$9,288,930	56,634	2,038,735	2,165,472			
Ave.	103	4,470	\$2,566,257	2,098	75,509	80,203	29.94	535.66	

STATE LANDS TOTAL									
Rpt. 28B Completed Sales									
Year	# of Sales	Acres	\$ Stumpage	MBF	Cords	Cd. Equiv.	Avg. \$/ Cd Eq.	Avg. \$/Acre	
1995	215	13,263	\$2,990,027	3,407	214,938	223,595	\$ 13.37	\$ 225.44	
1996	184	11,599	\$3,058,009	4,180	176,133	187,043	\$ 16.35	\$ 263.64	
1997	176	8,969	\$2,999,916	1,716	142,413	146,909	\$ 20.42	\$ 334.48	
1998	139	7,670	\$3,387,197	1,674	122,447	126,679	\$ 26.74	\$ 441.62	
1999	162	7,059	\$2,633,224	2,074	106,638	112,837	\$ 23.34	\$ 373.03	
2000	166	7,989	\$3,412,927	4,207	108,855	118,944	\$ 28.69	\$ 427.20	
2001	198	11,019	\$5,588,213	5,920	169,476	183,650	\$ 30.43	\$ 507.14	
2002	170	8,485	\$4,466,164	3,422	128,982	137,659	\$ 32.44	\$ 526.36	
2003	166	8,330	\$4,634,548	5,016	138,308	150,288	\$ 30.84	\$ 556.37	
2004	126	7,005	\$3,793,316	4,913	112,399	123,808	\$ 30.64	\$ 541.52	
2005	158	8,431	\$5,369,008	3,232	153,393	161,119	\$ 33.32	\$ 636.82	
2006	123	7,858	\$5,606,339	2,921	127,190	134,908	\$ 41.56	\$ 713.46	
2007	132	8,362	\$5,445,558	3,124	133,040	142,167	\$ 38.30	\$ 651.23	
2008	225	15,083	\$9,619,170	6,324	240,009	257,210	\$ 37.40	\$ 637.75	
2009	236	12,131	\$6,624,108	5,224	204,883	219,123	\$ 30.23	\$ 546.05	
2010	198	16,432	\$10,796,161	7,299	293,292	309,886	\$ 34.84	\$ 657.02	
2011	215	15,712	\$10,281,755	5,632	272,028	284,785	\$ 36.10	\$ 654.39	
2012	190	14,177	\$8,724,471	4,569	231,113	241,317	\$ 36.15	\$ 615.40	
2013	242	16,925	\$10,641,432	6,658	281,896	296,959	\$ 35.83	\$ 628.74	
2014	234	16,530	\$11,082,369	4,411	282,363	292,179	\$ 37.93	\$ 670.44	
2015	240	16,931	\$11,606,465	7,247	273,791	290,021	\$ 40.02	\$ 685.52	
2016	226	14,794	\$11,						

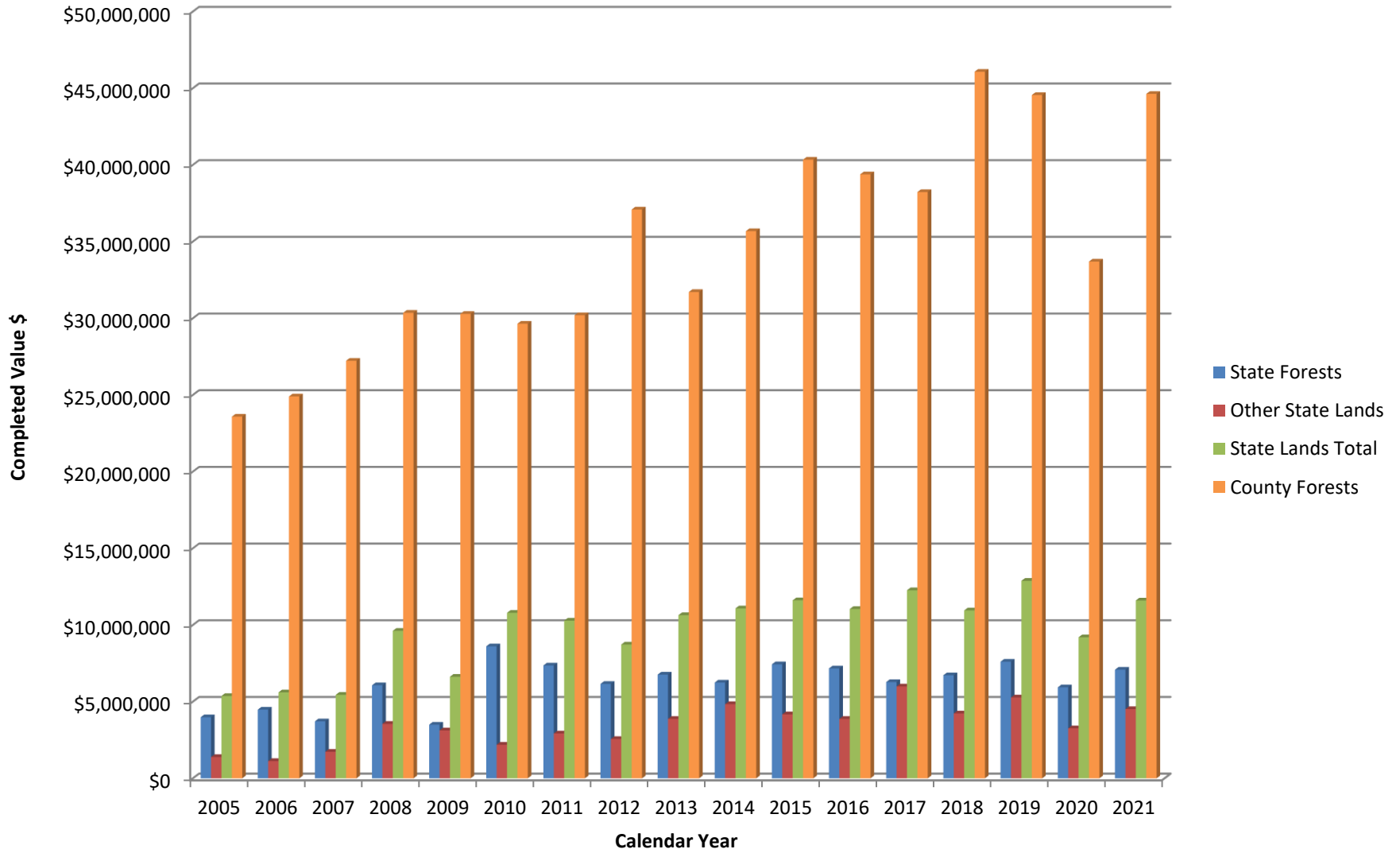
Acres of Timber Sales Completed



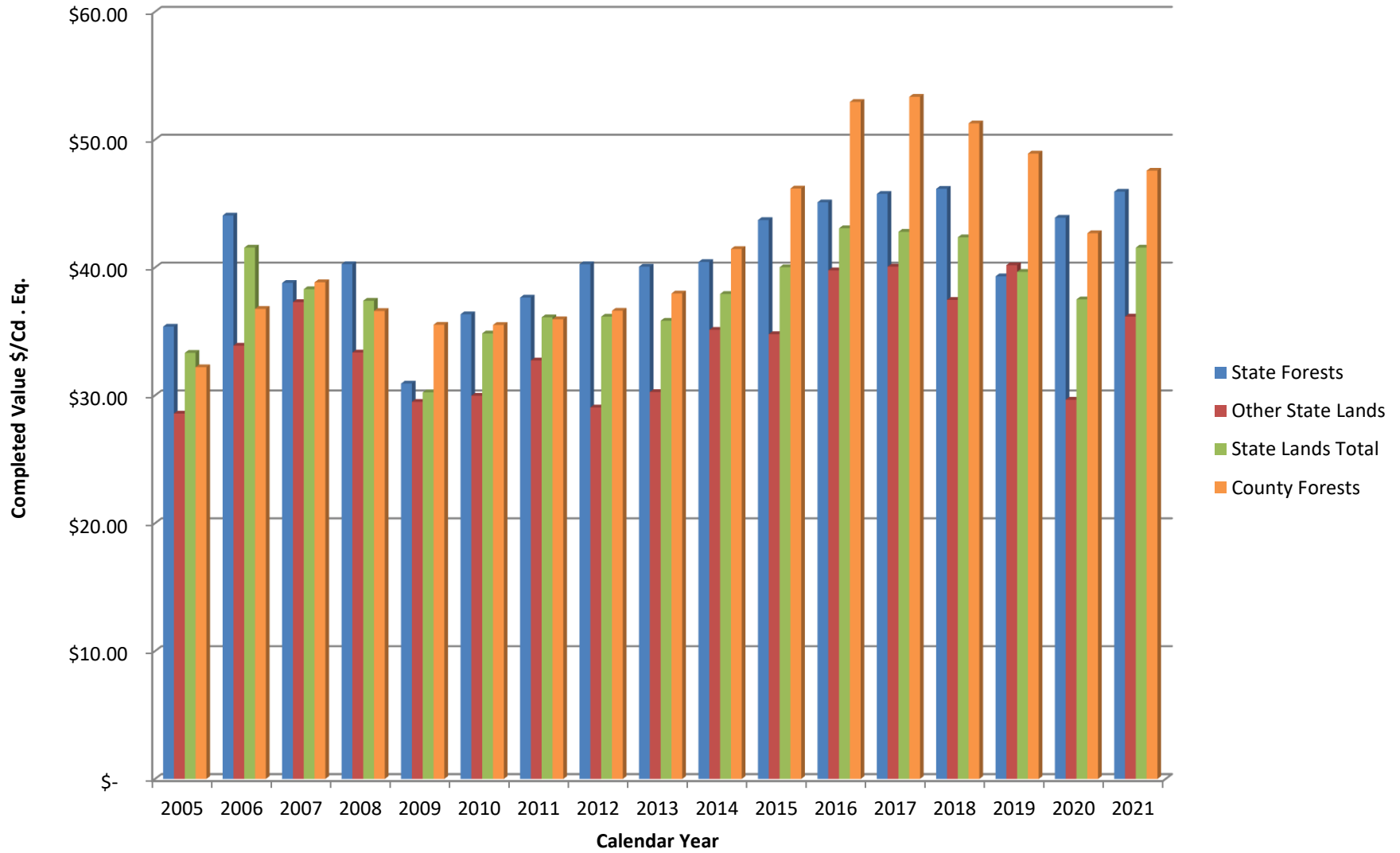
Cord Eq. Volume of Timber Sales Completed



Value of Timber Sales Completed



Average Value per Cord Equivalent of Timber Sales Completed



Average Value per Acre of Timber Sales Completed

