

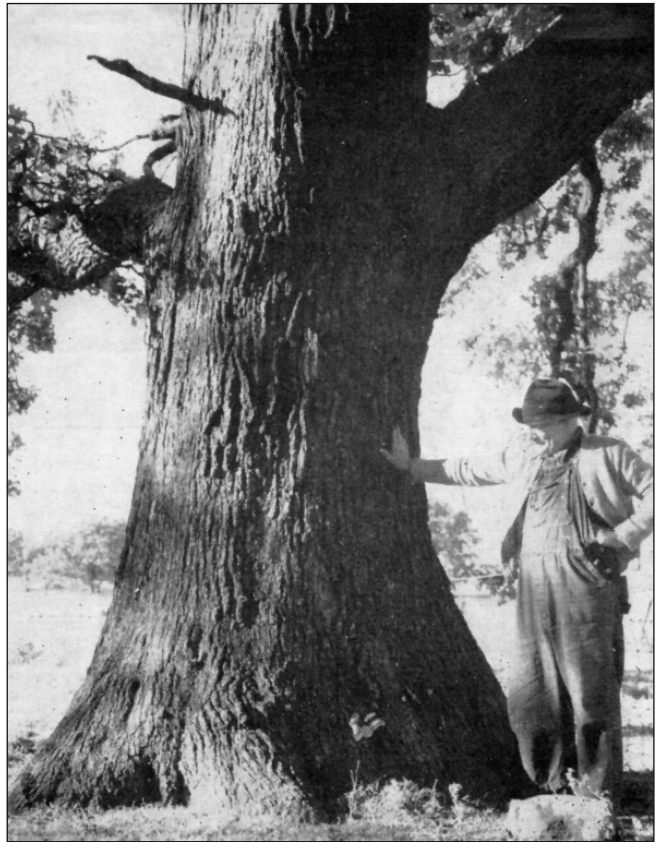
The Phelps Oak

Dodge County

On Wednesday, September 11, 1964, high winds buffeted Dodge County. Among the casualties was one of the largest bur oaks in the state, a mammoth growing on the farm of H. M. Phelps on State Highway 33, about three miles west of Fox Lake.

At one time Walter Scott, record tree recorder, reported it as the largest bur oak in the state, measuring 14 feet 1 inch in circumference, with a height of 88 feet and a crown spread of 108 feet. Due to Scott's efforts, however, people became more aware of the record-size trees around them, and the Phelps oak eventually lost its top ranking.

Still, the Phelps oak enjoyed a deserved fame, making the cover of the *Wisconsin Conservation Bulletin* in October 1952 and serving as a bench mark for its species. It was hollow when it blew down, prompting a dramatic photo in the *Beaver Dam Daily Citizen*. When such a monarch crashes to earth, it does not go unnoticed.



Phelps Oak

Wisconsin Agriculture and Farmer (c. 1952)