

Northeast Lakeshore Monitoring Fact Sheet

The Northeast Lakeshore Total Maximum Daily Load (TMDL) was approved on October 30, 2023. The TMDL identifies the need for pollutant reductions in waterbodies throughout the basin to meet water quality standards. There are 51 stream segments and 12 lakes in the Northeast Lakeshore region listed as impaired due to excess phosphorus and/or sediment loading.

Phosphorus is an essential nutrient for plant growth, but can have detrimental effects on lakes, rivers, and streams when excessive amounts are introduced to these systems. Common forms of pollutant delivery in these systems include surface runoff from urban and agricultural areas and discharges from wastewater treatment facilities, industrial businesses, and farms. Excess phosphorus in a river system can create harmful algal blooms during the summer months which impact human, plant, and animal life.

In 2023, the Northeast Lakeshore Volunteer Monitoring program began to help achieve the monitoring goals outlined in the TMDL. There are 12 stream monitoring locations across 12 tributary streams which are monitored by citizen volunteers. Volunteers are relied upon to collect surface water samples following WDNR protocol on a monthly basis between the months of May and October. Water samples are shipped to the State Lab of Hygiene in Madison and are analyzed for Total Phosphorus, Total Suspended Solids, and Total Nitrogen.

Basin Facts:

- Watershed area: ~2,000 square miles
- Includes 8 counties (Brown, Calumet, Door, Fond du Lac, Kewaunee, Manitowoc, Ozaukee, and Sheboygan)
- 63 impaired waterbody segments
- 69 Concentrated Animal Feeding Operations (CAFOs)
- 10 MS4s*
- 49 Dischargers
 - 32 municipal
 - 17 industrial

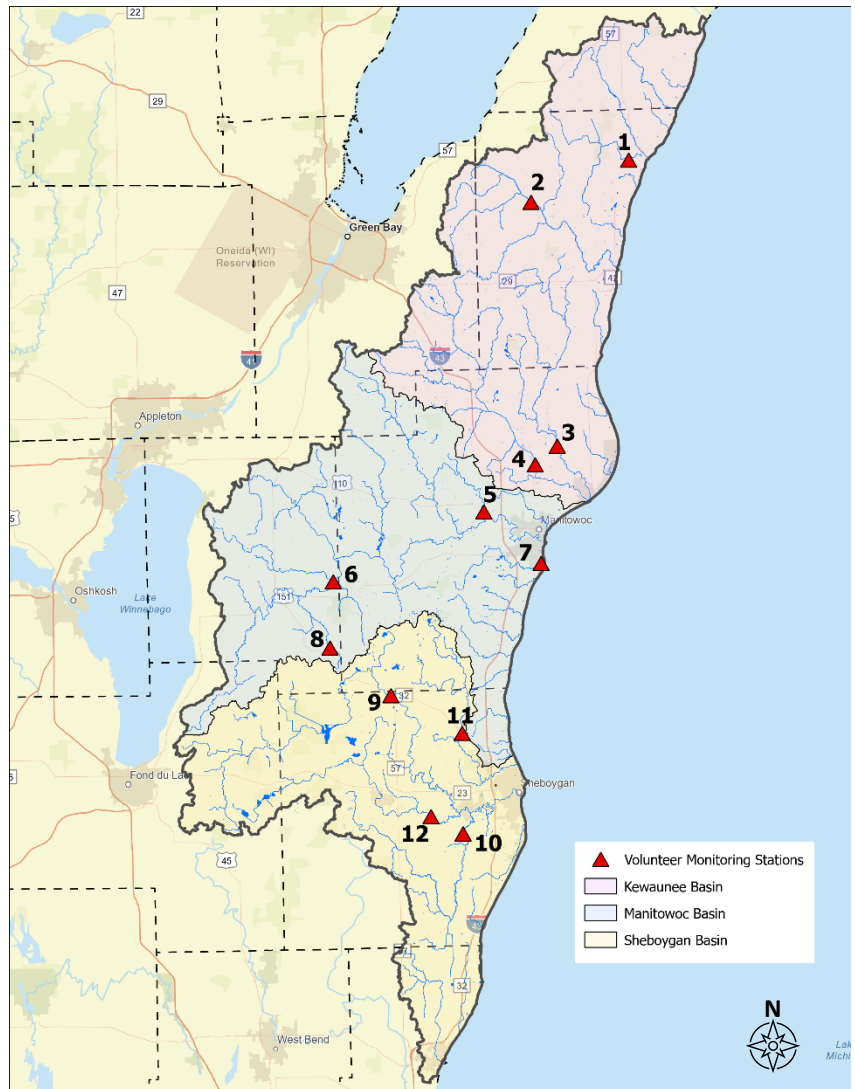
Want to get involved or have questions?

Contact:

Katherine Wendorf
Water Resource Management Specialist
Natural Resource Program Coordinator
(920) 296-5126

Katherine.wendorf@wisconsin.gov

*MS4s - municipal separate storm sewer system; municipalities with WPDES permits for stormwater management.



More information can be found at: <https://dnr.wisconsin.gov/topic/TMDLs/NElakeshore.html>

See backside for exact sample locations

	Stream Name	WBIC	SWIMS ID	SWIMS Station Name	Latitude	Longitude	Impairment
1	Silver Creek	94900	10020779	Silver Creek at Willow Rd	44.60788	-87.47114	TP
2	Kewaunee River	90700	10029954	Kewaunee River at Hillside Rd	44.55438	-87.65939	TP
3	East Twin River	84000	10008207	East Twin River at Steiners Corners Rd	44.22131	-87.62302	TP
4	West Twin River	87000	10029482	West Twin River at CTH V	44.19678	-87.66578	TP
5	Branch River	71300	363299	Branch River at N Union Rd	44.13479	-87.76542	TP
6	South Branch Manitowoc River	77900	363375	South Branch Manitowoc River at Lemke Rd	44.03367	-88.06298	TP
7	Silver Creek	67300	363228	Silver Creek at CTH LS	44.06227	-87.65994	TP
8	Pine Creek	79900	10020831	Pine Creek at CTH T	43.9548	-88.06231	TP
9	Sheboygan River	50700	10021359	Sheboygan River at STH 57	43.8873	-87.95099	TP
10	Onion River	51200	603480	Onion River at Ourtown Rd	43.69669	-87.82086	TP
11	Pigeon River	62300	603294	Pigeon River at STH 42	43.78144	-87.74747	TP
12	Mullet River	53400	10049358	Mullet River at Sumac Rd	43.72143	-87.88	TP

*SWIMS – Surface Water Integrated Monitoring System; a Wisconsin DNR information system that holds chemistry (water, sediment), physical, and biological (macroinvertebrate, aquatic invasive species) surface water data.