

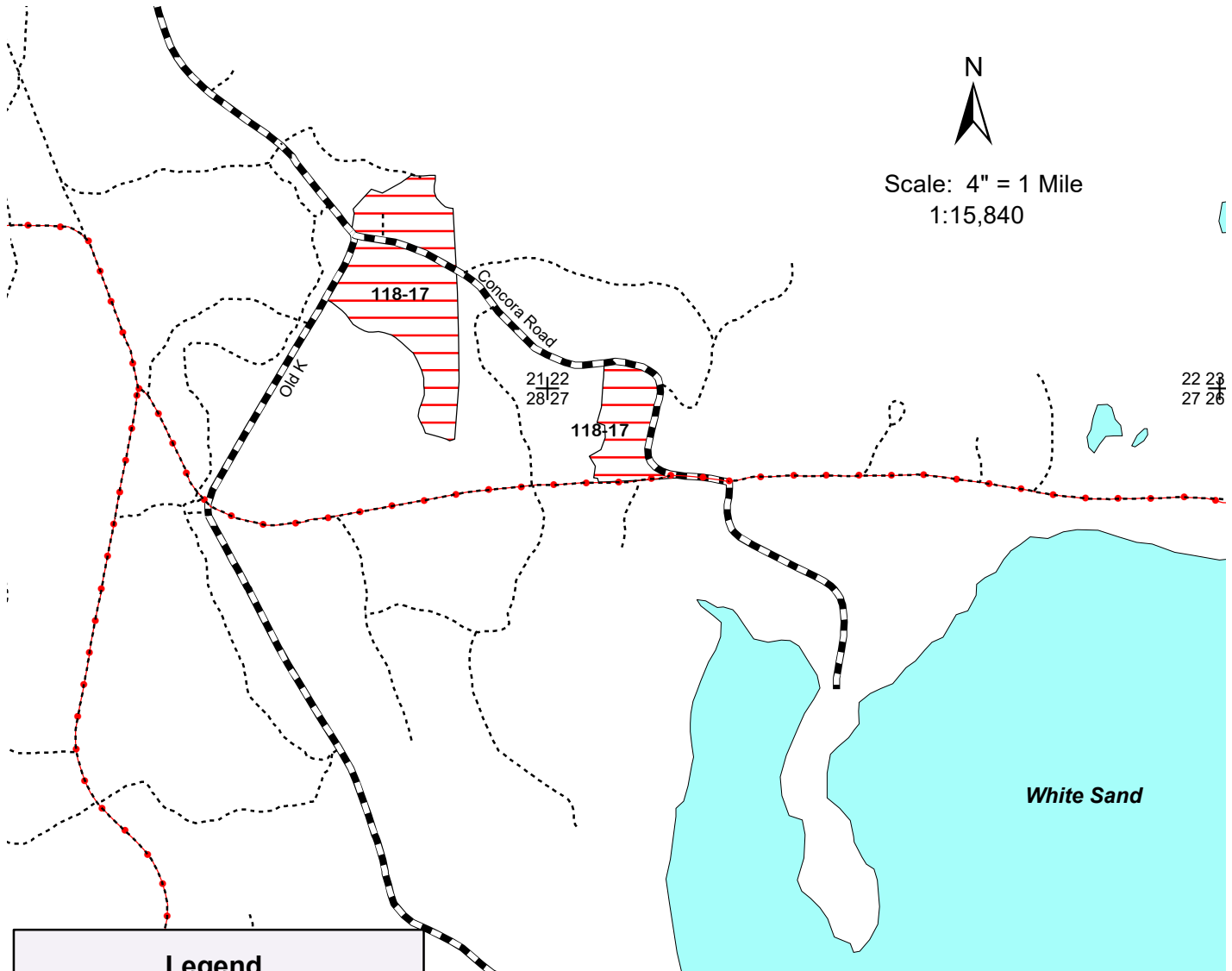
Northern Highland - American Legion State Forest

C118H Stand 17

Concora Aspen 38 Acres

Town of Boulder Junction, Vilas County, T42N-R7E Secs. 21, 22, 27 & 28

NHAL - SF Master Plan: Mgmt. Area 3 - Vilas Sandy Plains North - Forest Production



Legend

- + Section Corner
- Woods Roads
- Snowmobile Trails
- ▬▬ Highways and Town Roads
- ▨ Aspen Regeneration Area
- Lakes

Area 3 - Vilas Sandy Plains North - Forest Production Area

C118H Stand 17 (38 acres) is a stand of 61 year old aspen containing a mixture of white birch, red maple, scrub oak and red and white pine. The aspen, maple and 1-5 inch maple will be cut. In addition, scattered mature scrub oak, white birch and pine will also be harvested.



Map produced by
Anderson/Wetterau, 3/22