

WDNR Stewardship Grant Acquisitions Mapping Tool



The Wisconsin DNR Stewardship Acquisition Grants Interactive Web Mapping is a map-based system that enables individuals to locate and obtain information on lands acquired by local units of government and non-profit conservation organizations with the assistance of a grant from the Knowles-Nelson Stewardship Grant Program.

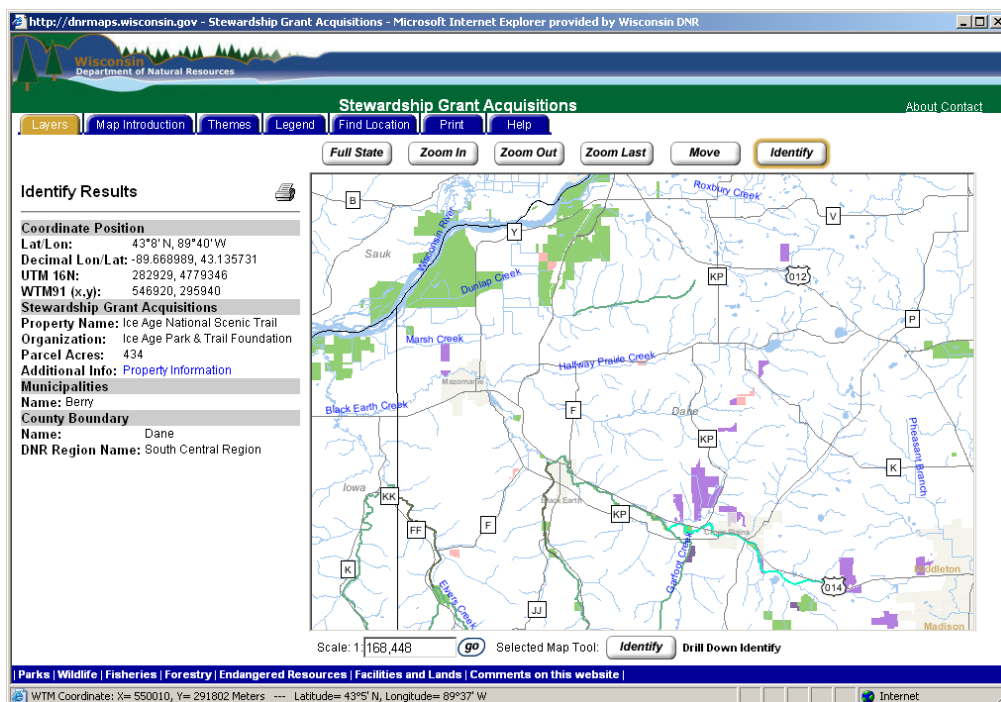
You can find this tool at:
<http://dnr.wi.gov/stewardship>

Then click on the "Maps – Find Stewardship Grants" link on the left sidebar.

To Use the Viewer

When you open the Stewardship Grant Acquisitions tool, you will see a map frame on the right, a number of blue tabs across the top and white buttons directly above the map window. These buttons allow you to navigate in the map and identify features.

For more information on the **Knowles-Nelson Stewardship Program**, visit;
<http://dnr.wi.gov/stewardship>



Here are some basic hints to help you get started. Before using any of these tools, click the tool button to activate it. The active button is highlighted in yellow and is also displayed.



Changes the extent of the map to show the entire state of WI.

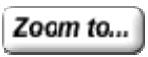


Allows you to zoom into a particular area of interest to see more detail. You can do this in two ways. Using the mouse, click on the *Zoom In* button and then:

- click on a point on the map you wish to be the center of your selected area (one click zooms in approximately 2X).
- define a window by clicking on a point on the map and, keeping the mouse depressed, pull the rectangle being formed until it covers the area of interest and release the mouse button.



Clicking the map with the *Zoom Out* tool active causes the map to "back out" so you can see approximately 2X more with each "click". The map will be centered at the point clicked.



Use this option to zoom to a specific area of interest, such as a county, city, or township/range/section.

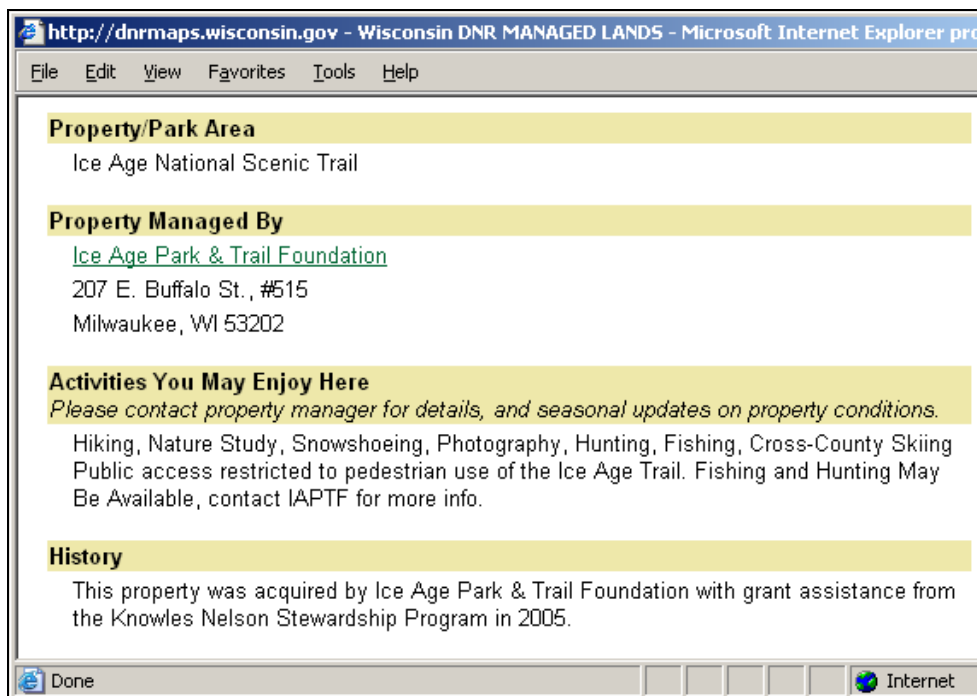


Use the *Move* tool to pan through the area shown in the map window. Click and hold cursor on map. Move mouse in the direction you want to drag the map then release the mouse button.

WDNR Stewardship Grant Acquisitions Tool continued

Identify

The Drill Down Identify tool displays information about each visible layer at the map position clicked. To use, simply click on any **PURPLE** (grants), **GREEN** or **PINK** (DNR managed lands) displayed on the map, and view basic info the results in the left window. A link will also be provided for **Property Information**, such as property name, contact info, & potential activities (hiking, fishing, etc.).



The lands displayed in **purple** are the Stewardship Grant Acquisition properties, owned and/or managed by non-profit organizations and local units of government, and acquired with the aid of a Stewardship Grant.

When you use the **Identify** button to click on these lands, then go to the **Property Information** link to see who to contact for more information, and potential activities to enjoy there such as hiking, fishing, etc.

Important Tabs

Layers

This tab allows you to turn on/off layers. To use, check the box to turn layers on and uncheck to turn layers off. As you zoom in and out, many of the layers will turn on and off automatically.

Themes

This tab allows you to move back and forth between this tool and the “DNR Managed Lands” Tools, which display information about DNR-owned lands. Clicking on one of the other “Themes” listed here will toggle you into the DNR Managed Lands environment. While there, you can again visit “Themes” and toggle back to the Stewardship Grant Acquisitions theme to resume viewing grant-funded properties.

Legend

This tab allows you to see the legend for each layer that appears in the map frame.

Find Location

This tab allows you to find features based on different options. Using <Find Location>, you can zoom to a specific city, village, or county.

Print

Click <Print> to create a printable version of your map. You can enter map title, select page size, and choose scale. After entering this information, click <OK>.

Help

Click this tab for descriptions of how the white buttons work.

For more information on the Stewardship Grant Acquisitions Web Mapping Tool, contact: Jillian Steffes, Jillian.Steffes@wisconsin.gov or 608-267-3542

