

# Florence County

## AQUATIC OCCURRENCES

### Animal

Eiktoe, *Alasmidonta marginata*, 1997  
 Osprey, *Pandion haliaetus*, 2008  
 Mink Frog, *Lithobates septentrionalis*, 2008  
 Bald Eagle, *Haliaeetus leucocephalus*, 2003  
 Black Tern, *Chlidonias niger*, 2008  
 Wood Turtle, *Glyptemys insculpta*, 2008  
 Spruce Grouse, *Falco sparverius canadensis*, 2003  
 Black Meadowhawk, *Sympetrum danae*, 1985  
 Boreal Chickadee, *Parus hudsonicus*, 2002  
 Red-shouldered Hawk, *Buteo lineatus*, 2006  
 West Virginia White, *Pteris virginiana*, 2002  
 Black-backed Woodpecker, *Picoides arcticus*, 2008

### Plants

Moor Rush, *Juncus stygius*, 1999  
 Swamp-pink, *Arethusa bulbosa*, 2003  
 Crawe Sedge, *Carex crawei*, 1982  
 Livid Sedge, *Carex livida* var. *radiculis*, 1997  
 Cuckooflower, *Cardamine pratensis*, 1982  
 Fairy Slipper, *Calypto bulbosa*, 1982  
 Brown Beakrush, *Rhynchospora fusca*, 1997  
 Marsh Valerian, *Valeriana sitchensis* ssp. *uliginosa*, 1999  
 Sheathed Sedge, *Carex vaginata*, 1964  
 Hill's Pondweed, *Potamogeton hillii*, 1998  
 Assiniboine Sedge, *Carex assiniboensis*, 1999  
 Capitate Spikerush, *Eleocharis olivacea*, 1995  
 Leafy White Orchis, *Platanthera dilatata*, 2000  
 Northern Bog Sedge, *Carex cynocrates*, 2006  
 Alpine Cotton-grass, *Eriophorum alpinum*, 2006  
 Round-leaved Orchis, *Amerorchis rotundifolia*, 2000  
 White Adder's-mouth, *Malaxis monophylla* var. *brachypoda*, 1999  
 Few-flower Spikerush, *Eleocharis quinqueflora*, 2006  
 Showy Lady's-slipper, *Cypripedium reginae*, 2007  
 Variegated Horsetail, *Equisetum variegatum*, 1982  
 Sparse-flowered Sedge, *Carex tenuiflora*, 1997  
 Common Bog Arrow-grass, *Triglochin maritima*, 1997  
 Northern Black Currant, *Ribes hudsonianum*, 2007  
 Western Jacob's Ladder, *Polemonium occidentale* ssp. *lacustre*, 1999  
 Autumnal Water-starwort, *Callitriche hermaphrodita*, 1967  
 Ram's-head Lady's-slipper, *Cypripedium arietinum*, 2006  
 Slim-stem Small-reedgrass, *Calamagrostis stricta*, 1996  
 Hidden-fruited Bladderwort, *Utricularia geminiscapa*, 1995  
 Small Yellow Water Crowfoot, *Ranunculus gmelinii*, 1997

### Natural Communities

Muskeg, Muskeg, 2006  
 Open Bog, Open bog, 1984  
 Spring Pond, Spring pond, 1986  
 Lake-Spring, Lake-spring, 1981  
 Lake-Unique, Lake-unique, 1981  
 Emergent Marsh, Emergent marsh, 1992  
 Lake-Soft Bog, Lake-soft bog, 1987  
 Boreal Rich Fen, Boreal rich fen, 1987  
 Black Spruce Swamp, Black spruce swamp, 2006  
 Northern Wet Forest, Northern wet forest, 1996  
 Northern Sedge Meadow, Northern sedge meadow, 2004  
 Stream-Fast, Hard, Cold, Stream-fast, hard, cold, 1982  
 Stream-Fast, Hard, Warm, Stream-fast, hard, warm, 1983  
 Stream-Slow, Hard, Cold, Stream-slow, hard, cold, 1983  
 Lake-Deep, Hard, Seepage, Lake-deep, hard, seepage, 1981  
 Lake-Deep, Soft, Seepage, Lake-deep, soft, seepage, 1989  
 Northern Wet-mesic Forest, Northern wet-mesic forest, 2007  
 Lake-Deep, Hard, Drainage, Lake-deep, hard, drainage, 1996  
 Lake-Shallow, Hard, Seepage, Lake-shallow, hard, seepage, 2006  
 Lake-Shallow, Soft, Seepage, Lake-shallow, soft, seepage, 1983  
 Lake-Shallow, Hard, Drainage, Lake-shallow, hard, drainage, 2006  
 Lake-Deep, Very Soft, Seepage, Lake-deep, very soft, seepage, 1981

## TERRESTRIAL OCCURRENCES

### Animal

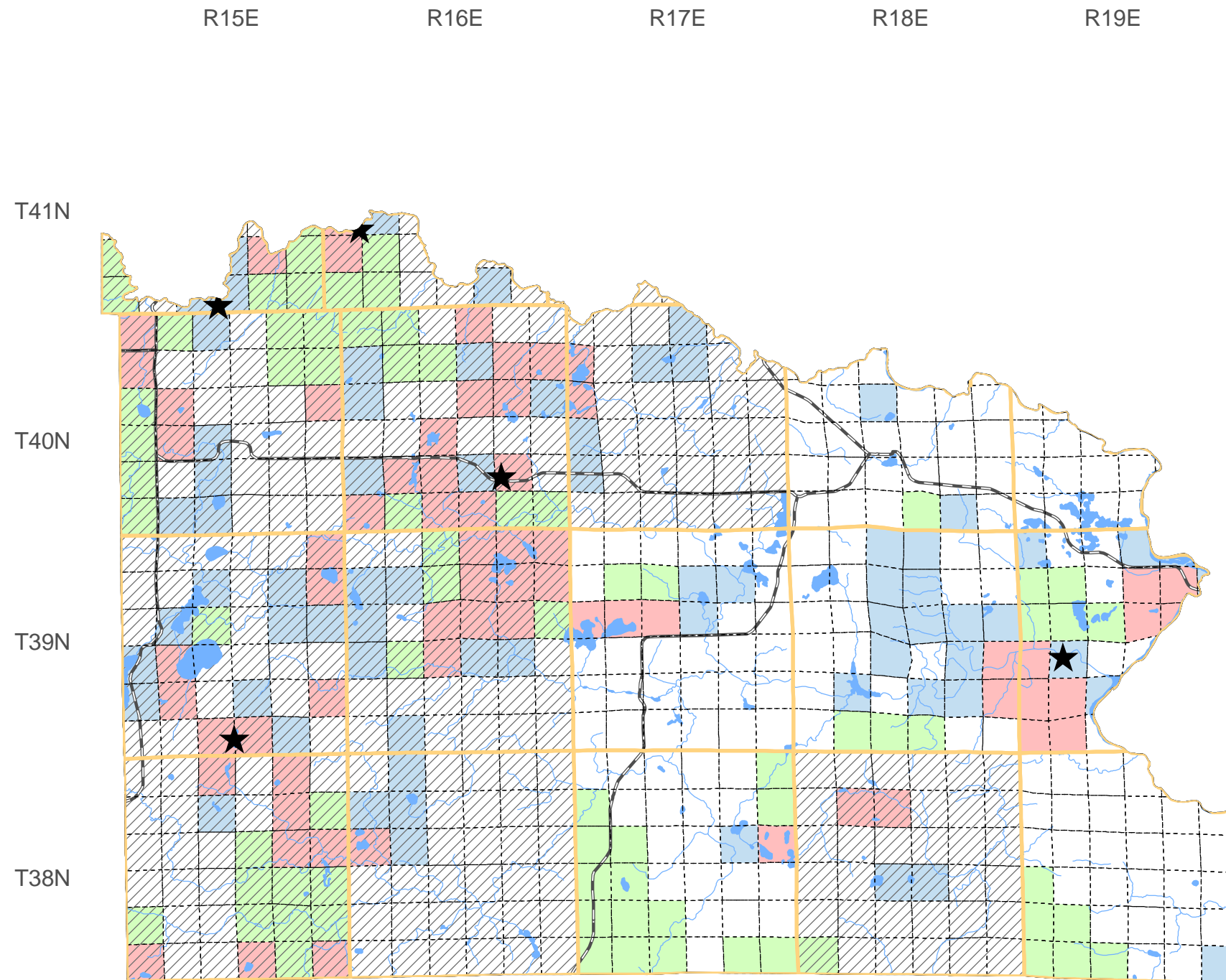
Gray Wolf, *Canis lupus*, 2008  
 Northern Blue, *Lycaeides idas*, 1988  
 Canada Warbler, *Wilsonia canadensis*, 2008  
 American Marten, *Martes americana*, 2008  
 Cape May Warbler, *Dendroica tigrina*, 2008  
 Northern Goshawk, *Accipiter gentilis*, 2008  
 Upland Sandpiper, *Batrachia longicauda*, 1997  
 Leonard's Skipper, *Hesperia leonardus*, 1995  
 Olive-sided Flycatcher, *Contopus cooperi*, 2008  
 Northern Ring-necked Snake, *Diadophis punctatus edwardsii*, 1973

### Plants

Purple Clematis, *Clematis occidentalis*, 1982  
 Green Spleenwort, *Asplenium viride*, 1997  
 Dwarf Huckleberry, *Vaccinium cespitosum*, 2001  
 Smith Melic Grass, *Melic smithii*, 2006  
 Braun's Holly-fern, *Polystichum braunii*, 1997  
 Large Roundleaf Orchid, *Platanthera orbiculata*, 1987  
 Little Goblin Moonwort, *Botrychium mormo*, 2005  
 Heart-leaved Foam-flower, *Tiarella cordifolia*, 1982

### Natural Communities

Moist Cliff, Moist cliff, 1982  
 Pine Barrens, Pine barrens, 1986  
 Bracken Grassland, Bracken grassland, 1986  
 Northern Mesic Forest, Northern mesic forest, 2007  
 Northern Dry-mesic Forest, Northern dry-mesic forest, 1997



SPECIES and/or NATURAL COMMUNITY | Aquatic | Terrestrial | Both | Township Occurrences | Watershed Boundaries | State Natural Area



This map represents the known occurrences of rare species and natural communities that have been recorded in the Wisconsin Natural Heritage Inventory (NHI). Colored sections indicate the presence of one or more occurrences within that section. Hatched townships indicate one or more occurrences reported only at the township level. The date following the names above notes the most recent year the occurrence was recorded in the county.



Map generated using NHI data from: 04/08/2009  
 Copyright 2003, WDNR-Bureau of Endangered Resources  
 This map may not be reproduced without prior written permission.