

# Racine County

## AQUATIC OCCURRENCES

### Animal

Eiktoe, *Alasmodonta marginata*, 2001  
 Ellipse, *Venustaconcha ellipsiformis*, 2001  
 Queensnake, *Regina septemvittata*, 1971  
 Least Darter, *Etheostoma microperca*, 1979  
 Pirate Perch, *Aphredoderus sayanus*, 1979  
 Redside Dace, *Clinostomus elongatus*, 1900  
 Round Pigtoe, *Pleurobema sintoxia*, 2001  
 Lake Sturgeon, *Acipenser fulvescens*, 1900  
 Mulberry Wing, *Poanes massasoit*, 1992  
 Redfin Shiner, *Lythrurus umbratilis*, 1924  
 Pugnose Minnow, *Opsopoeodus emiliae*, 1995  
 Pugnose Shiner, *Notropis anogenus*, 1979  
 River Redhorse, *Moxostoma carinatum*, 1994  
 Striped Shiner, *Luxilus chrysocephalus*, 1978  
 Lake Chubsucker, *Erimyzon sucetta*, 1978  
 Longear Sunfish, *Lepomis megalotis*, 1978  
 Banded Killifish, *Fundulus diaphanus*, 1995  
 Prairie Crayfish, *Procambarus gracilis*, 1984  
 Blanding's Turtle, *Emydoidea blandingii*, 2007  
 Red-shouldered Hawk, *Buteo lineatus*, 1982  
 Two-spotted Skipper, *Euphyes bimaculata*, 1977  
 Broad-winged Skipper, *Poanes viator*, 1992  
 Black-crowned Night-heron, *Nycticorax nycticorax*, 1950

### Plants

Swamp-pink, *Arethusa bulbosa*, 1888  
 Crane Sedge, *Carex crawei*, 1992  
 Low Nutrush, *Scleria verticillata*, 2000  
 Cuckooflower, *Cardamine pratensis*, 1883  
 Smooth Phlox, *Phlox glaberrima* ssp. interior, 1843  
 Whip Nutrush, *Scleria triglomerata*, 1880  
 Ohio Goldenrod, *Solidago ohioensis*, 2000  
 Tufted Bulrush, *Scirpus cespitosus*, 1987  
 False Hop Sedge, *Carex lupuliformis*, 1992  
 Beaked Spikerush, *Eleocharis rostellata*, 2000  
 Seaside Crowfoot, *Ranunculus cymbalaria*, 1928  
 Tufted Hairgrass, *Deschampsia cespitosa*, 1900  
 Waxleaf Meadowrue, *Thalictrum revolutum*, 1990  
 Marsh Blazing Star, *Liatris spicata*, 1993  
 American Sea-rocket, *Cakile lacustris*, 1970  
 Variegated Horsetail, *Equisetum variegatum*, 1898  
 Sparse-flowered Sedge, *Carex tenuiflora*, 1932  
 Sticky False-asphodel, *Tofieldia glutinosa*, 2000  
 Lesser Fringed Gentian, *Gentianopsis procera*, 2001  
 Slender Bog Arrow-grass, *Triglochin palustris*, 2001  
 Small White Lady's-slipper, *Cypripedium candidum*, 1898  
 Prairie White-fringed Orchid, *Platanthera leucophaea*, 1914  
 Northern Yellow Lady's-slipper, *Cypripedium parviflorum* var. makasin, 1955

### Natural Communities

Shrub-carr, Shrub-carr, 1976  
 Lake-Oxbow, Lake-oxbow, 1976  
 Wet Prairie, Wet prairie, 1992  
 Calcareous Fen, Calcareous fen, 1993  
 Emergent Marsh, Emergent marsh, 1992  
 Floodplain Forest, Floodplain forest, 1993  
 Wet-mesic Prairie, Wet-mesic prairie, 1993  
 Northern Wet Forest, Northern wet forest, 1992  
 Southern Sedge Meadow, Southern sedge meadow, 1993  
 Southern Hardwood Swamp, Southern hardwood swamp, 1993  
 Stream-Fast, Hard, Warm, Stream-fast, hard, warm, 1970  
 Lake-Deep, Hard, Drainage, Lake-deep, hard, drainage, 1976  
 Springs and Spring Runs, Hard, Springs and spring runs, hard, 1976  
 Southern Tamarack Swamp (Rich), Southern tamarack swamp (rich), 1991

## TERRESTRIAL OCCURRENCES

### Animal

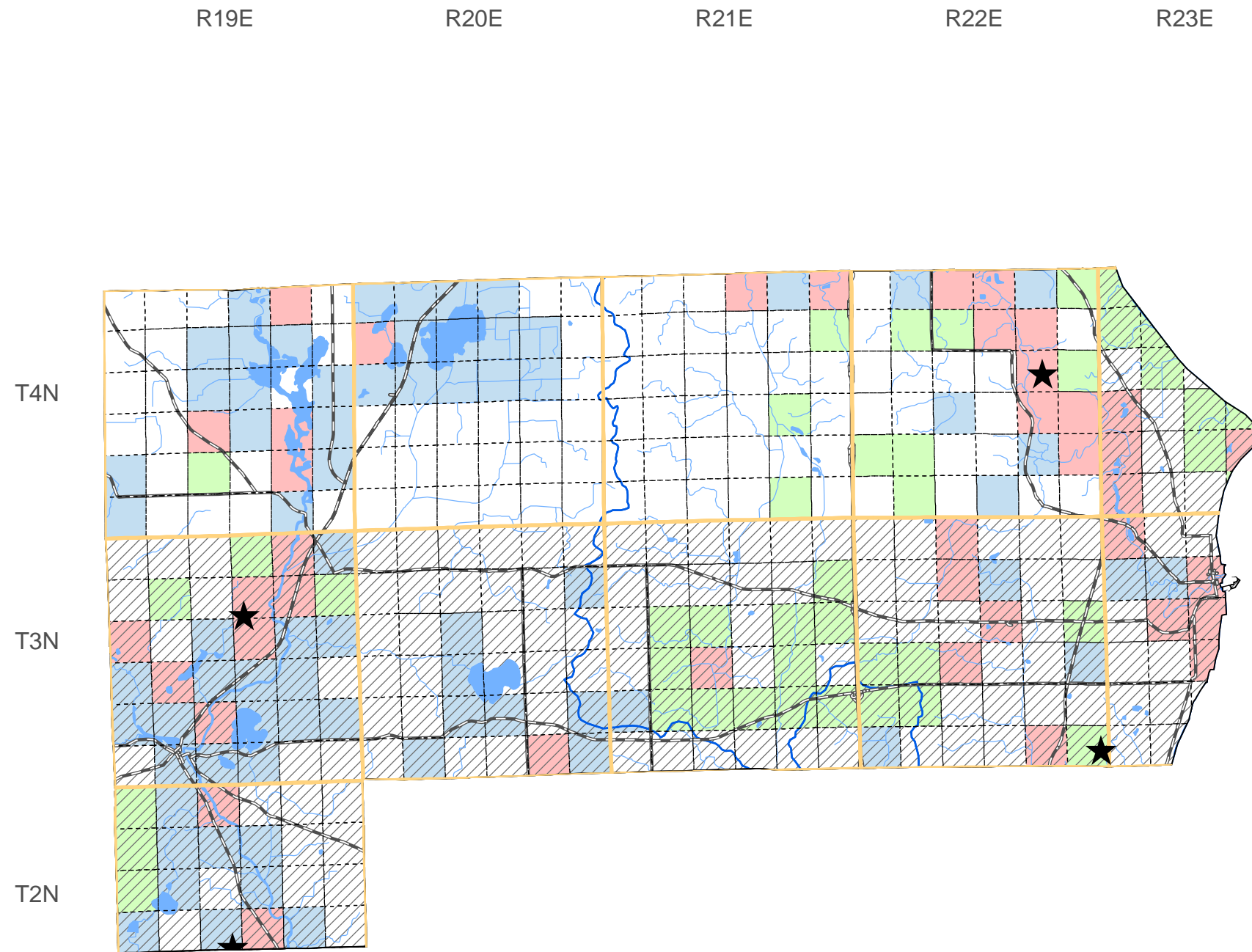
Barn Owl, *Tyto alba*, 1975  
 Dickcissel, *Spiza americana*, 1999  
 Bird Rookery, Bird Rookery, 1993  
 Peregrine Falcon, *Falco peregrinus*, 2006  
 Upland Sandpiper, *Bartramia longicauda*, 1987  
 Western Meadowlark, *Sturnella neglecta*, 1997

### Plants

Wafer-ash, *Ptelea trifoliata*, 1993  
 Thickspike, *Elymus lanceolatus* ssp. psammophilus, 1959  
 Forked Aster, *Aster furcatus*, 1992  
 Kitten Tails, *Besseyia bullii*, 2001  
 Low Calamint, *Calamintha arkanzana*, 1897  
 Christmas Fern, *Polystichum acrostichoides*, 1898  
 Cluster Fescue, *Festuca paradoxa*, 1930  
 Hill's Thistle, *Cirsium hillii*, 1897  
 Seaside Spurge, *Euphorbia polygonifolia*, 1898  
 Yellow Gentian, *Gentiana alba*, 2000  
 Purple Milkweed, *Asclepias purpurascens*, 1985  
 Woolly Milkweed, *Asclepias lanuginosa*, 1965  
 Earleaf Foxglove, *Tomianthera auriculata*, 1900  
 Prairie Milkweed, *Asclepias sullivantii*, 1992  
 Richardson Sedge, *Carex richardsonii*, 1901  
 Smooth Black-haw, *Viburnum prunifolium*, 1998  
 American Gromwell, *Lithospermum latifolium*, 1993  
 Climbing Fumitory, *Adlumia fungosa*, 1899  
 Hairy Beardtongue, *Penstemon hirsutus*, 1985  
 Reflexed Trillium, *Trillium recurvatum*, 2004  
 American Fever-few, *Parthenium integrifolium*, 1993  
 Bluestem Goldenrod, *Solidago caesia*, 2002  
 Cooper's Milkvetch, *Astragalus neglectus*, 1971  
 Wilcox Panic Grass, *Panicum wilcoxianum*, 1944  
 Yellow Giant Hyssop, *Agastache nepetoides*, 1976  
 Great Indian-plantain, *Cacalia muehlenbergii*, 1994  
 Heart-leaved Skullcap, *Scutellaria ovata*, 1998  
 Pale-purple Coneflower, *Echinacea pallida*, 1987  
 Prairie Indian Plantain, *Cacalia tuberosa*, 1995

### Natural Communities

Mesic Prairie, Mesic prairie, 1993  
 Dry-mesic Prairie, Dry-mesic prairie, 1993  
 Southern Dry Forest, Southern dry forest, 1993  
 Southern Mesic Forest, Southern mesic forest, 2004  
 Southern Dry-mesic Forest, Southern dry-mesic forest, 1993



SPECIES and/or  
NATURAL COMMUNITY



Aquatic



Terrestrial



Both



Township  
Occurrences



Watershed  
Boundaries



State  
Natural Area



This map represents the known occurrences of rare species and natural communities that have been recorded in the Wisconsin Natural Heritage Inventory (NHI). Colored sections indicate the presence of one or more occurrences within that section. Hatched townships indicate one or more occurrences reported only at the township level. The date following the names above notes the most recent year the occurrence was recorded in the county.



ENDANGERED  
RESOURCES

Map generated using NHI data from: 04/08/2009  
 Copyright 2003, WDNR-Bureau of Endangered Resources  
 This map may not be reproduced without prior written permission.