

# Rock County

## AQUATIC OCCURRENCES

### Animal

Eiktoe, *Alasmodonta marginata*, 1990  
 Osprey, *Pandion haliaetus*, 2008  
 Ellipse, *Venustaconcha ellipsiformis*, 1990  
 Monkeyface, *Quadrula metanevra*, 1990  
 Mud Darter, *Etheostoma asprigene*, 1928  
 Grave Chub, *Erimystax x-punctatus*, 2003  
 Silver Chub, *Macrhybopsis storeriana*, 1974  
 Weed Shiner, *Notropis texanus*, 1974  
 American Eel, *Anguilla rostrata*, 1975  
 Least Darter, *Etheostoma microperca*, 2006  
 Ozark Minnow, *Notropis nubilus*, 2006  
 Redside Dace, *Clinostomus elongatus*, 1983  
 Round Pigtoe, *Pleurobema sintoxia*, 1990  
 Dark Rubyspot, *Hetaerina titia*, 1987  
 Jade Clubtail, *Argemphus submedianus*, 1990  
 Mulberry Wing, *Poanes massasoit*, 1991  
 Pallid Shiner, *Notropis annis*, 1900  
 Redfin Shiner, *Lythrurus umbratilis*, 2006  
 Pugnose Minnow, *Opsopoeodus emiliae*, 1928  
 Plains Clubtail, *Gomphurus externus*, 1989  
 Greater Redhorse, *Moxostoma valenciennesi*, 1986  
 Purple Wartyback, *Cyclonaias tuberculata*, 1990  
 American Bullfrog, *Lithobates catesbeianus*, 1986  
 Blanding's Turtle, *Emydoidea blandingii*, 2008  
 Eastern Massasauga, *Sistrurus catenatus catenatus*, 1988  
 Starhead Topminnow, *Fundulus dispar*, 1983  
 A Flat-headed Mayfly, *Pseudiron centralis*, 1992  
 Prothonotary Warbler, *Protonotaria citrea*, 2005  
 A Brush-legged Mayfly, *Homoeoneuria armophila*, 1992  
 Russet-tipped Clubtail, *Stylurus plagiatus*, 1992  
 A Common Burrower Mayfly, *Pentagenia vittigera*, 1992  
 Yellow-crowned Night-heron, *Nyctanassa violacea*, 1989

### Plants

Sycamore, *Platanus occidentalis*, 1971  
 Swamp-pink, *Arethusa bulbosa*, 1884  
 Livid Sedge, *Carex livida* var. *radicalis*, 1969  
 Cuckooflower, *Cardamine pratensis*, 2005  
 Glade Mallow, *Napaea dioica*, 1991  
 Pink Milkwort, *Polygala incarnata*, 1971  
 Swamp Agrimony, *Agrimonia parviflora*, 1983  
 Marsh Horsetail, *Equisetum palustre*, 1968  
 Slender Bulrush, *Scirpus heterochaetus*, 1969  
 Bluntleaf Spurge, *Euphorbia obtusata*, 1957  
 Spreading Chervil, *Chaerophyllum procumbens*, 1994  
 Waxleaf Meadowrue, *Thalictrum revolutum*, 1969  
 Yellow Water Lily, *Nuphar advena*, 1975  
 Crossleaf Milkwort, *Polygala cruciata*,  
 Prairie Straw Sedge, *Carex suberecta*, 1957  
 Small Forget-me-not, *Myosotis laxa*, 1988  
 Showy Lady's-slipper, *Cypripedium reginae*, 1872  
 Common Bog Arrow-grass, *Triglochin maritima*, 1969  
 Lesser Fringed Gentian, *Gentianopsis procera*, 1983  
 Flat-stemmed Spike-rush, *Eleocharis compressa*, 1969  
 Roundfruit St. John's-wort, *Hypericum sphaerocarpon*, 1972  
 Small White Lady's-slipper, *Cypripedium candidum*, 1994  
 Prairie White-fringed Orchid, *Platanthera leucophaea*, 2008  
 Sweet-scented Indian-plantain, *Cacalia suaveolens*, 1972  
 Northern Yellow Lady's-slipper, *Cypripedium parviflorum* var. *makasin*, 1992

### Natural Communities

Open Bog, Open bog, 2001  
 Shrub-carr, Shrub-carr, 1984  
 Lake-Oxbow, Lake-oxbow, 1983  
 Wet Prairie, Wet prairie, 2001  
 Calcareous Fen, Calcareous fen, 1983  
 Emergent Marsh, Emergent marsh, 1984  
 Lake-Hard Bog, Lake-hard bog, 1983  
 Floodplain Forest, Floodplain forest, 2001  
 Wet-mesic Prairie, Wet-mesic prairie, 2005  
 Northern Wet Forest, Northern wet forest, 1983  
 Southern Sedge Meadow, Southern sedge meadow, 1984  
 Springs and Spring Runs, Hard, Springs and spring runs, hard, 1984

## TERRESTRIAL OCCURRENCES

### Animal

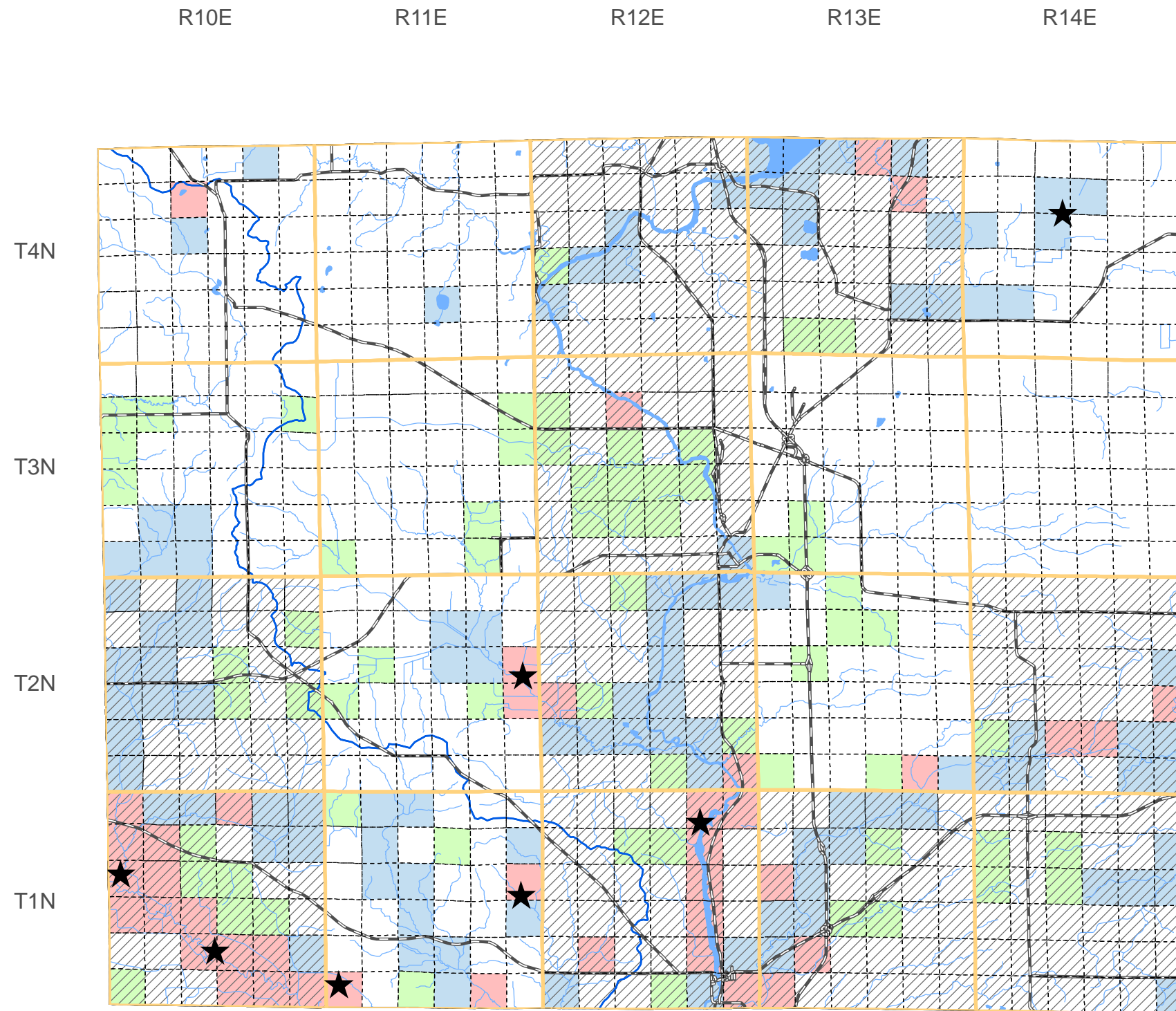
Lark Sparrow, *Chondestes grammacus*, 2002  
 Prairie Vole, *Microtus ochrogaster*, 1909  
 Hooded Warbler, *Wilsonia citrina*, 2002  
 Cerulean Warbler, *Dendroica cerulea*, 2002  
 Loggerhead Shrike, *Lanius ludovicianus*, 1987  
 Ornate Box Turtle, *Terrapene ornata*, 1996  
 Acadian Flycatcher, *Empidonax vireoscens*, 2002  
 Gorgone Checker Spot, *Chlosyne gorgone*, 1994  
 Yellow-throated Warbler, *Dendroica dominica*, 1989  
 Franklin's Ground Squirrel, *Spermophilus franklinii*, 1906

### Plants

Innocence, *Houstonia caerulea*, 1969  
 Musk-root, *Adoxa moschatellina*, 1970  
 Wafer-ash, *Ptelea trifoliata*, 1976  
 Beak Grass, *Diarrhena obovata*, 1958  
 Marbledseed, *Onosmodium molle*, 1974  
 Wood Spurge, *Euphorbia commutata*, 1939  
 Forked Aster, *Aster furcatus*, 1997  
 Kitten Tails, *Besseyia bullii*, 2000  
 Snowy Campion, *Silene nivea*, 1957  
 Wild Hyacinth, *Camassia scilloides*, 1877  
 Fragrant Sumac, *Rhus aromatica*, 1995  
 Hill's Thistle, *Cirsium hillii*, 2002  
 Small Skullcap, *Scutellaria parvula* var. *parvula*, 1972  
 Yellow Gentian, *Gentiana alba*, 1957  
 Dragon Wormwood, *Artemisia dracunculoides*, 1889  
 Floodman Thistle, *Cirsium flodmanii*, 1934  
 Prairie Parsley, *Polytaenia nuttallii*, 1987  
 Purple Milkweed, *Asclepias purpurascens*, 2005  
 Woolly Milkweed, *Asclepias lanuginosa*, 1992  
 Prairie Milkweed, *Asclepias sullivantii*, 1995  
 Richardson Sedge, *Carex richardsonii*, 1969  
 Smooth Black-haw, *Viburnum prunifolium*, 1981  
 American Gromwell, *Lithospermum latifolium*, 1972  
 Hairy Beardtongue, *Penstemon hirsutus*, 1890  
 Reflexed Trillium, *Trillium recurvatum*, 1994  
 Hairy Wild-petunia, *Ruellia humilis*, 2002  
 Roundstem Foxglove, *Agalinis gattingeri*, 1969  
 Short's Rock-creep, *Arabis shortii*, 1989  
 Prairie Bush-clover, *Lespedeza leptostachya*, 2008  
 Yellow Giant Hyssop, *Agastache nepetoides*, 1990  
 Great Indian-plantain, *Cacalia muehlenbergii*, 1958  
 Narrow-leaved Vervain, *Verbena simplex*, 1890  
 Purple Meadow-parsnip, *Thaspium trifoliatum* var. *flavum*, 1967  
 Large Roundleaf Orchid, *Platanthera obticulata*, 1972  
 Pale-purple Coneflower, *Echinacea pallida*, 2002  
 Rough Rattlesnake-root, *Prenanthes aspera*, 1992  
 Prairie False-dandelion, *Microseris cuspidata*, 1988  
 Prairie Indian Plantain, *Cacalia tuberosa*, 1991  
 Yellow Evening Primrose, *Calylophus serrulatus*, 1972  
 Three-flower Melic Grass, *Melica nitens*, 1941

### Natural Communities

Dry Cliff, Dry cliff, 2003  
 Dry Prairie, Dry prairie, 2001  
 Moist Cliff, Moist cliff, 2001  
 Oak Opening, Oak opening, 1986  
 Mesic Prairie, Mesic prairie, 2001  
 Dry-mesic Prairie, Dry-mesic prairie, 2001  
 Southern Dry Forest, Southern dry forest, 2001  
 Southern Mesic Forest, Southern mesic forest, 2001  
 Southern Dry-mesic Forest, Southern dry-mesic forest, 2001



SPECIES and/or  
NATURAL COMMUNITY



Aquatic



Terrestrial



Both



Township  
Occurrences



Watershed  
Boundaries



State  
Natural Area



This map represents the known occurrences of rare species and natural communities that have been recorded in the Wisconsin Natural Heritage Inventory (NHI). Colored sections indicate the presence of one or more occurrences within that section. Hatched townships indicate one or more occurrences reported only at the township level. The date following the names above notes the most recent year the occurrence was recorded in the county.

Map generated using NHI data from: 04/08/2009  
 Copyright 2003, WDNR-Bureau of Endangered Resources  
 This map may not be reproduced without prior written permission.



ENDANGERED  
RESOURCES