

Walworth County

AQUATIC OCCURRENCES

Animal

- Eliktoe, *Alasmidonta marginata*, 2001
- Ellipse, *Venustaconcha ellipsiformis*, 2001
- Queensnake, *Regina septemvittata*, 2008
- Gravel Chub, *Erimystax x-punctatus*, 2003
- River Bluet, *Enallagma anna*, 1990
- Least Darter, *Etheostoma microperca*, 2006
- Ozark Minnow, *Notropis nubilus*, 2006
- Round Pigtoe, *Pleurobema sintoxia*, 2001
- Mulberry Wing, *Poanes massasoitii*, 1992
- Rainbow Shell, *Villosa iris*, 2001
- Pugnose Shiner, *Notropis anogenus*, 1978
- Slender Madtom, *Noturus exilis*, 1975
- Striped Shiner, *Luxilus chrysocephalus*, 1924
- Lake Chubsucker, *Erimyzon succetta*, 1978
- Longear Sunfish, *Lepomis megalotis*, 1978
- Swamp Metalmark, *Calephelis muticum*, 1973
- A Jumping Spider, *Paradamoetas fontana*, 1951
- Banded Killifish, *Fundulus diaphanus*, 1979
- Fragile Forktail, *Ischnura posita*, 1990
- Lilypad Forktail, *Ischnura kellicotti*, 1990
- Prairie Crayfish, *Procambarus gracilis*, 1932
- American Bullfrog, *Lithobates catesbeianus*, 1986
- Blanding's Turtle, *Emydoidea blandingii*, 2006
- Eastern Massasauga, *Sistrurus catenatus catenatus*, 1999
- Starhead Topminnow, *Fundulus dispar*, 1978
- Silphium Borer Moth, *Papaipema silphii*, 2002
- Slippershell Mussel, *Alasmidonta viridis*, 2001
- Worm-eating Warbler, *Helminthos vermivorus*, 1999
- Broad-winged Skipper, *Poanes viator*, 1993
- Double-striped Bluet, *Enallagma basidens*, 1991
- Black-crowned Night-heron, *Nycticorax nycticorax*, 1890

Plants

- Sycamore, *Platanus occidentalis*, 1993
- Swamp-pink, *Arethusa bulbosa*, 1996
- Low Nutrush, *Scleria verticillata*, 2000
- Cuckooflower, *Cardamine pratensis*, 1989
- Whip Nutrush, *Scleria triglomerata*, 2000
- Adder's-tongue, *Ophioglossum pusillum*, 1941
- Ohio Goldenrod, *Solidago ohioensis*, 2005
- Swamp Agrimony, *Agrimonia parviflora*, 2001
- Tufted Bulrush, *Scirpus cespitosus*, 1996
- Hemlock Parsley, *Conioselinum chinense*, 1966
- Marsh Horsetail, *Equisetum palustre*, 1989
- Beaked Spikerush, *Eleocharis rostellata*, 2005
- Seaside Crowfoot, *Ranunculus cymbalaria*, 1885
- Downy Willow-herb, *Epilobium strictum*, 1999
- Many-headed Sedge, *Carex sychnocephala*, 1992
- Waxleaf Meadowrue, *Thalictrum revolutum*, 1964
- Yellow Water Lily, *Nuphar advena*, 1938
- Leafy White Orchis, *Platanthera dilatata*, 1996
- Marsh Blazing Star, *Liatris spicata*, 1992
- Few-flower Spikerush, *Eleocharis quinqueflora*, 1996
- Showy Lady's-slipper, *Cypripedium reginae*, 1992
- Sticky False-asphodel, *Tofieldia glutinosa*, 1992
- Common Bog Arrow-grass, *Triglochin maritima*, 2005
- Lesser Fringed Gentian, *Gentianopsis procera*, 2005
- Slender Bog Arrow-grass, *Triglochin palustris*, 2000
- Roundfruit St. John's-wort, *Hypericum sphaerocarpum*, 1998
- Small White Lady's-slipper, *Cypripedium candidum*, 2006
- Prairie White-fringed Orchid, *Platanthera leucophaea*, 2004
- Sweet-scented Indian-plantain, *Cacalia suaveolens*, 1973
- Northern Yellow Lady's-slipper, *Cypripedium parviflorum var. makasin*, 1997

Natural Communities

- Open Bog, Open bog, 1976
- Bog Relict, Bog relict, 1987
- Shrub-carr, Shrub-carr, 1976
- Calcareous Fen, Calcareous fen, 1993
- Emergent Marsh, Emergent marsh, 1993
- Lake-Hard Bog, Lake-hard bog, 1976
- Wet-mesic Prairie, Wet-mesic prairie, 2005
- Northern Wet Forest, Northern wet forest, 1976
- Southern Sedge Meadow, Southern sedge meadow, 1992
- Stream-Slow, Hard, Warm, Stream-slow, hard, warm, 1985
- Lake-Deep, Hard, Drainage, Lake-deep, hard, drainage, 1988
- Lake-Shallow, Hard, Drainage, Lake-shallow, hard, drainage, 1976
- Springs and Spring Runs, Hard, Springs and spring runs, hard, 1986
- Southern Tamarack Swamp (Rich), Southern tamarack swamp (rich), 1992

TERRESTRIAL OCCURRENCES

Animal

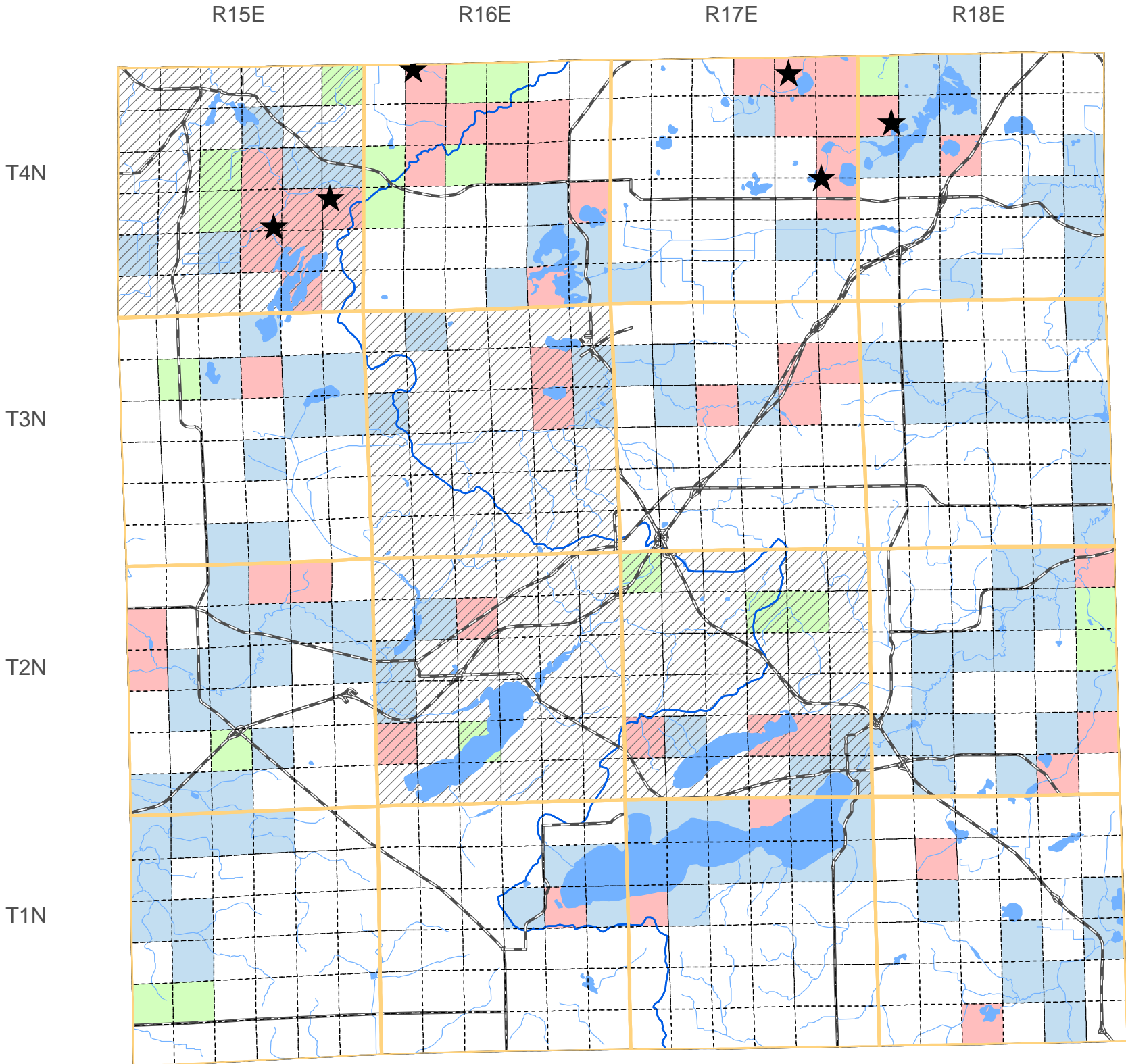
- Hooded Warbler, *Wilsonia citrina*, 1993
- Cerulean Warbler, *Dendroica cerulea*, 1999
- Kentucky Warbler, *Oporornis formosus*, 1999
- Herp Hibernaculum, *Herp Hibernaculum*, 1988
- Acadian Flycatcher, *Empidonax vireescens*, 1993
- Red-tailed Prairie Leafhopper, *Aftelia rubranura*, 2003

Plants

- Innocence, *Houstonia caerulea*, 1951
- Wafer-ash, *Ptelea trifoliata*, 2008
- Swan Sedge, *Carex swanii*, 2002
- Forked Aster, *Aster furcatus*, 2000
- Kitten Tails, *Besseyia bullii*, 2003
- Wild Hyacinth, *Camassia scilloides*, 1994
- Christmas Fern, *Polystichum acrostichoides*, 1931
- Small Skullcap, *Scutellaria parvula var. parvula*, 1991
- Upland Boneset, *Eupatorium sessilifolium var. brittonianum*, 1975
- Yellow Gentian, *Gentiana alba*, 1929
- Purple Milkweed, *Asclepias purpurascens*, 2000
- Rock Stitchwort, *Minuartia dawsonensis*, 1973
- Soft-leaf Muhly, *Muhlenbergia richardsonis*, 1992
- Woolly Milkweed, *Asclepias lanuginosa*, 1965
- Earleaf Foxglove, *Tomianthera auriculata*, 2001
- Prairie Milkweed, *Asclepias sullivantii*, 2001
- Autumn Coral-root, *Corallorhiza odontorhiza*, 2001
- Canada Horse-balm, *Collinsia canadensis*, 1940
- Pale Green Orchid, *Platanthera flava var. herbiola*, 1914
- Reflexed Trillium, *Trillium recurvatum*, 1999
- Hairy Wild-petunia, *Ruellia humilis*, 1940
- Yellow Giant Hyssop, *Agastache nepetoides*, 1995
- Narrow-leaved Verbena, *Verbena simplex*, 1993
- Purple Meadow-parsnip, *Thaspium trifoliatum var. flavum*, 1936
- Prairie Indian Plantain, *Cacalia tuberosa*, 2000

Natural Communities

- Dry Prairie, Dry prairie, 1993
- Oak Opening, Oak opening, 1993
- Mesic Prairie, Mesic prairie, 1992
- Dry-mesic Prairie, Dry-mesic prairie, 1993
- Southern Dry Forest, Southern dry forest, 1993
- Southern Mesic Forest, Southern mesic forest, 1989
- Southern Dry-mesic Forest, Southern dry-mesic forest, 1997



SPECIES and/or NATURAL COMMUNITY | Aquatic | Terrestrial | Both | Township Occurrences | Watershed Boundaries | State Natural Area



This map represents the known occurrences of rare species and natural communities that have been recorded in the Wisconsin Natural Heritage Inventory (NHI). Colored sections indicate the presence of one or more occurrences within that section. Hatched townships indicate one or more occurrences reported only at the township level. The date following the names above notes the most recent year the occurrence was recorded in the county.

Map generated using NHI data from: 04/08/2009
Copyright 2003, WDNR-Bureau of Endangered Resources
This map may not be reproduced without prior written permission.



ENDANGERED RESOURCES