

Rock County

AQUATIC OCCURRENCES

Animal

A Brush-legged Mayfly, *Homoioneria ammophila*, 1992
 American Bullfrog, *Lithobates catesbeianus*, 1986
 Northern Cricket Frog, *Acris crepitans*, 1971
 Redfin Shiner, *Lythrurus umbratilis*, 2006
 Eastern Massasauga, *Sistrurus catenatus catenatus*, 1988
 Purple Wartyback, *Cyclonaias tuberculata*, 1990
 Round Pigtoe, *Pleurobema sintoxia*, 1990
 Mulberry Wing, *Poanes massasoitii*, 1991
 Blanding's Turtle, *Emydoidea blandingii*, 2008
 Mud Darter, *Etheostoma asprigene*, 1928
 Yellow-crowned Night-heron, *Nyctanassa violacea*, 1989
 American Eel, *Anguilla rostrata*, 1975
 Silver Chub, *Macrhybopsis storeriana*, 1974
 Dark Rubyspot, *Hetaerina titia*, 1987
 Weed Shiner, *Notropis texanus*, 1974
 Ellipse, *Venustaconcha ellipsiformis*, 1990
 Ozark Minnow, *Notropis nubilis*, 2006
 A Common Burrowing Mayfly, *Pentagenia vittigera*, 1992
 Black Tern, *Chlidonias niger*, 2009
 Jade Clubtail, *Argemophus submedianus*, 1990
 Elktoe, *Alasmidonta marginata*, 2009
 Plains Clubtail, *Gomphurus externus*, 1989
 Gravel Chub, *Erimystax x-punctatus*, 2003
 Rainbow Shell, *Villosa iris*, 1990
 Monkeyface, *Quadrula metanevra*, 1990
 Red-shouldered Hawk, *Buteo lineatus*, 2009
 Osprey, *Pandion haliaetus*, 2008
 A Flat-headed Mayfly, *Pseudiron centralis*, 1992
 Pallid Shiner, *Notropis amnis*, 1900
 Starhead Topminnow, *Fundulus dispar*, 1983
 Least Darter, *Etheostoma microperca*, 2006
 Russet-tipped Clubtail, *Stylurus piagatus*, 1992
 Greater Redhorse, *Moxostoma valenciennesi*, 2006
 Redside Dace, *Clinostomus elongatus*, 1983
 Pugnose Minnow, *Opsopoeodus emiliae*, 1928
 Prothonotary Warbler, *Protonotaria citrea*, 2005

Plants

Waxleaf Meadowrue, *Thalictrum revolutum*, 1969
 Crossleaf Milkwort, *Polygala cruciata*,
 Small Forget-me-not, *Myosotis laxa*, 1988
 Northern Yellow Lady's-slipper, *Cypripedium parviflorum var. makasin*, 1992
 Flat-stemmed Spike-rush, *Eleocharis compressa*, 1969
 Prairie Straw Sedge, *Carex suberecta*, 1957
 Swamp-pink, *Arethusa bulbosa*, 1884
 Showy Lady's-slipper, *Cypripedium reginae*, 1872
 Swamp Agrimony, *Agrimonia parviflora*, 1983
 Common Bog Arrow-grass, *Triglochin maritima*, 1969
 Prairie White-fringed Orchid, *Platanthera leucophaea*, 2008
 Spreading Chervil, *Chaerophyllum procumbens*, 1994
 Sycamore, *Platanus occidentalis*, 1971
 Bluntleaf Spurge, *Euphorbia obtusata*, 1957
 Slender Bulrush, *Scirpus heterochaetus*, 1969
 Livid Sedge, *Carex livida var. radicaulis*, 1969
 Glade Mallow, *Napaea dioica*, 1991
 Lesser Fringed Gentian, *Gentianopsis procera*, 1983
 Roundfruit St. John's-wort, *Hypericum sphaerocarpon*, 1972
 Marsh Horsetail, *Equisetum palustre*, 1968
 Cuckooflower, *Cardamine pratensis*, 2005
 Sweet-scented Indian-plantain, *Cacalia suaveolens*, 1972
 Small White Lady's-slipper, *Cypripedium candidum*, 1994
 Yellow Water Lily, *Nuphar advena*, 1975
 Pink Milkwort, *Polygala incarnata*, 1971

Natural Communities

Open Bog, Open bog, 2001
 Southern Sedge Meadow, Southern sedge meadow, 1984
 Emergent Marsh, Emergent marsh, 1984
 Wet Prairie, Wet prairie, 2001
 Wet-mesic Prairie, Wet-mesic prairie, 2005
 Floodplain Forest, Floodplain forest, 2001
 Calcareous Fen, Calcareous fen, 1983
 Northern Wet Forest, Northern wet forest, 1983
 Lake-Oxbow, Lake-oxbow, 1983
 Springs and Spring Runs, Hard, Springs and spring runs, hard, 1984
 Shrub-carr, Shrub-carr, 1984
 Lake-Hard Bog, Lake-hard bog, 1983

TERRESTRIAL OCCURRENCES

Animal

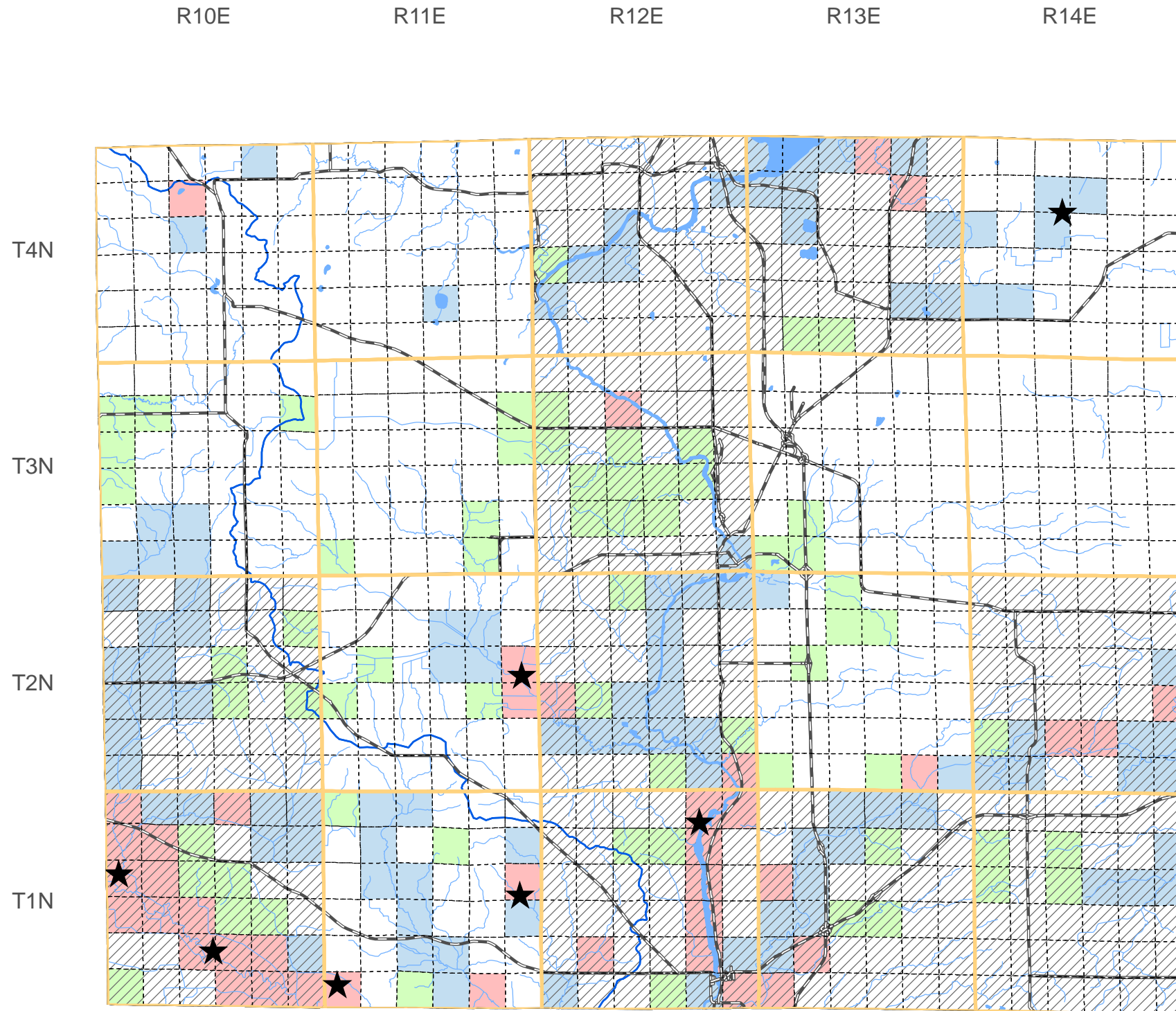
Yellow-throated Warbler, *Dendroica dominica*, 1989
 Prairie Vole, *Microtus ochrogaster*, 1909
 Yellow-billed Cuckoo, *Coccyzus americanus*, 2007
 Franklin's Ground Squirrel, *Spermophilus franklinii*, 1906
 Lark Sparrow, *Chondestes grammacus*, 2002
 Acadian Flycatcher, *Empidonax vireascens*, 2007
 Loggerhead Shrike, *Lanius ludovicianus*, 1987
 Gorgone Checker Spot, *Chlosyne gorgone*, 1994
 Ornate Box Turtle, *Terrapene ornata*, 1996
 Cerulean Warbler, *Dendroica cerulea*, 2007
 Hooded Warbler, *Wilsonia citrina*, 2007

Plants

Great Indian-plantain, *Cacalia muehlenbergii*, 1958
 Narrow-leaved Vervain, *Verbena simplex*, 1890
 Prairie Bush-clover, *Lespedeza leptostachya*, 2008
 Reflexed Trillium, *Trillium recurvatum*, 1994
 Yellow Giant Hyssop, *Agastache nepetoides*, 1990
 Wafer-ash, *Ptelea trifoliata*, 1976
 Musk-root, *Adoxa moschatellina*, 1970
 Yellow Gentian, *Gentiana alba*, 1957
 Hairy Beardtongue, *Penstemon hirsutus*, 1890
 Pale-purple Coneflower, *Echinacea pallida*, 2002
 Yellow Evening Primrose, *Calylophus serrulatus*, 1972
 Wood Spurge, *Euphorbia commutata*, 1939
 Richardson Sedge, *Carex richardsonii*, 1969
 Snowy Campion, *Silene nivea*, 1957
 Roundstem Foxglove, *Agalinis gattingeri*, 1969
 Three-flower Melic Grass, *Melica nitens*, 1941
 Small Skullcap, *Scutellaria parvula var. parvula*, 1972
 Prairie Indian Plantain, *Cacalia tuberosa*, 1991
 Short's Rock-cress, *Arabis shortii*, 1989
 Flodman Thistle, *Cirsium flodmanii*, 1934
 Purple Meadow-parsnip, *Thaspium trifoliatum var. flavum*, 1967
 Rough Rattlesnake-root, *Prenanthes aspera*, 1992
 Prairie Milkweed, *Asclepias sullivantii*, 1995
 Woolly Milkweed, *Asclepias lanuginosa*, 1992
 Fragrant Sumac, *Rhus aromatica*, 1995
 Purple Milkweed, *Asclepias purpurascens*, 2005
 Dragon Wormwood, *Artemisia dracunculoides*, 1889
 Wild Hyacinth, *Camassia scilloides*, 1877
 Prairie Parsley, *Polytaenia nuttallii*, 1987
 Hairy Wild-petunia, *Ruellia humilis*, 2002
 Hill's Thistle, *Cirsium hillii*, 2002
 Beak Grass, *Diarrhena obovata*, 1958
 Kitten Tails, *Besseyia bullii*, 2000
 Forked Aster, *Aster furcatus*, 1997
 Large Roundleaf Orchid, *Platanthera orbiculata*, 1972
 Innocence, *Houstonia caerulea*, 1969
 American Gromwell, *Lithospermum latifolium*, 1972
 Smooth Black-haw, *Viburnum prunifolium*, 1981
 Prairie False-dandelion, *Microseris cuspidata*, 1988
 Marbleseed, *Onosmodium molle*, 1974

Natural Communities

Oak Opening, Oak opening, 1986
 Dry Prairie, Dry prairie, 2001
 Southern Dry-mesic Forest, Southern dry-mesic forest, 2001
 Southern Dry Forest, Southern dry forest, 2001
 Dry-mesic Prairie, Dry-mesic prairie, 2001
 Mesic Prairie, Mesic prairie, 2001
 Dry Cliff, Dry cliff, 2003
 Moist Cliff, Moist cliff, 2001
 Southern Mesic Forest, Southern mesic forest, 2001



SPECIES and/or
NATURAL COMMUNITY



Aquatic



Terrestrial



Both



Township
Occurrences



Watershed
Boundaries



State
Natural Area



This map represents the known occurrences of rare species and natural communities that have been recorded in the Wisconsin Natural Heritage Inventory (NHI). Colored sections indicate the presence of one or more occurrences within that section. Hatched townships indicate one or more occurrences reported only at the township level. The date following the names above notes the most recent year the occurrence was recorded in the county.

Map generated using NHI data from: 09/15/2010
 Copyright 2003, WDNR-Bureau of Endangered Resources
 This map may not be reproduced without prior written permission.



ENDANGERED
RESOURCES