

Walworth County

AQUATIC OCCURRENCES

Animal

Slippershell Mussel, *Alasmidonta viridis*, 2007
 Broad-winged Skipper, *Poanes viator*, 1993
 American Bullfrog, *Lithobates catesbeianus*, 2009
 Eastern Massasauga, *Sistrurus catenatus catenatus*, 1999
 Northern Cricket Frog, *Acris crepitans*, 1971
 Blanding's Turtle, *Emydoidea blandingii*, 2009
 Round Pigtoe, *Pleurobema sintoxia*, 2006
 Banded Killifish, *Fundulus diaphanus*, 1979
 Mulberry Wing, *Poanes massasoit*, 1992
 Slender Madtom, *Noturus exilis*, 1975
 Black Redhorse, *Moxostoma duquesnei*, 2005
 Double-striped Bluet, *Enallagma basidens*, 1991
 Ellipse, *Venustaconcha ellipsiformis*, 2001
 River Bluet, *Enallagma anna*, 1990
 Eflin Skimmer, *Nannothemis bella*, 2006
 Lake Chubsucker, *Erimyzon succetta*, 1978
 Ozark Minnow, *Notropis nebulus*, 2006
 Striped Shiner, *Luxilus chrysocephalus*, 1924
 Fragile Forktail, *Ischnura posita*, 1990
 Great Egret, *Ardea alba*, 2009
 Queensnake, *Regina septemvittata*, 2008
 Worm-eating Warbler, *Helminthos vermivorus*, 1999
 Swamp Metalmark, *Calephelis muticum*, 1973
 Elktoe, *Alasmidonta marginata*, 2009
 A Jumping Spider, *Paradamoetas fontana*, 1951
 Rainbow Shell, *Villosa iris*, 2006
 Red-shouldered Hawk, *Buteo lineatus*, 2009
 Prairie Crayfish, *Procambarus gracilis*, 1932
 Pugnose Shiner, *Notropis anogenus*, 1978
 Lipped Forktail, *Ischnura kellicotti*, 1990
 Least Darter, *Etheostoma microperca*, 2006
 Siphium Borer Moth, *Papaipema siphii*, 2002
 Starhead Topminnow, *Fundulus dispar*, 1978
 Longear Sunfish, *Lepomis megalotis*, 1978
 Greater Redhorse, *Moxostoma valenciennesi*, 2005
 Black-crowned Night-heron, *Nycticorax nycticorax*, 1890

Plants

Seaside Crowfoot, *Ranunculus cymbalaria*, 1885
 Waxleaf Meadowrue, *Thalictrum revolutum*, 1964
 Beaked Spikerush, *Eleocharis rostellata*, 2009
 Sticky False-asphodel, *Tofieldia glutinosa*, 2009
 Northern Yellow Lady's-slipper, *Cypripedium parviflorum var. makasin*, 1997
 Prairie Straw Sedge, *Carex suberecta*, 2009
 Few-flower Spikerush, *Eleocharis quinqueflora*, 1996
 Leafy White Orchis, *Platanthera dilatata*, 1996
 Flat-stemmed Spike-rush, *Eleocharis compressa*, 2009
 Tufted Bulrush, *Scirpus cespitosus*, 2009
 Swamp-pink, *Arethusa bulbosa*, 1996
 Snowy Lady's-slipper, *Cypripedium reginae*, 1992
 Swamp Agrimony, *Agrimonia parviflora*, 2009
 Downy Willow-herb, *Epilobium strictum*, 1999
 Common Bog Arrow-grass, *Triglochin maritima*, 2009
 Prairie White-fringed Orchid, *Platanthera leucophaea*, 2004
 Low Nutrush, *Scleria verticillata*, 2009
 Slender Bog Arrow-grass, *Triglochin palustris*, 2009
 Adder's-tongue, *Ophioglossum pusillum*, 1941
 Sycamore, *Platanus occidentalis*, 1993
 Roundfruit St. John's-wort, *Hypericum sphaerocarpum*, 2009
 Lesser Fringed Gentian, *Gentianopsis procera*, 2009
 Many-headed Sedge, *Carex sychnocephala*, 1992
 Whip Nutrush, *Scleria triglomerata*, 2000
 Marsh Horsetail, *Equisetum palustre*, 1989
 Cuckooflower, *Cardamine pratensis*, 1989
 Sweet-scented Indian-plantain, *Cacalia suaveolens*, 1973
 Marsh Blazing Star, *Liatris spicata*, 1992
 Ohio Goldenrod, *Solidago ohioensis*, 2005
 Small White Lady's-slipper, *Cypripedium candidum*, 2009
 Hemlock Parsley, *Conioselinum chinense*, 1966
 Yellow Water Lily, *Nuphar advena*, 1938

Natural Communities

Bog Relict, Bog relict, 1987
 Open Bog, Open bog, 1976
 Lake-Deep, Hard, Drainage, Lake-deep, hard, drainage, 1988
 Wet-mesic Prairie, Wet-mesic prairie, 2009
 Southern Sedge Meadow, Southern sedge meadow, 2009
 Emergent Marsh, Emergent marsh, 1993
 Calcareous Fen, Calcareous fen, 2009
 Northern Wet Forest, Northern wet forest, 1976
 Springs and Spring Runs, Hard, Springs and spring runs, hard, 2009
 Southern Tamarack Swamp (Rich), Southern tamarack swamp (rich), 1992
 Shrub-carr, Shrub-carr, 1976
 Lake-Hard Bog, Lake-hard bog, 1976
 Lake-Shallow, Hard, Drainage, Lake-shallow, hard, drainage, 1976
 Stream-Slow, Hard, Warm, Stream-slow, hard, warm, 1985

TERRESTRIAL OCCURRENCES

Animal

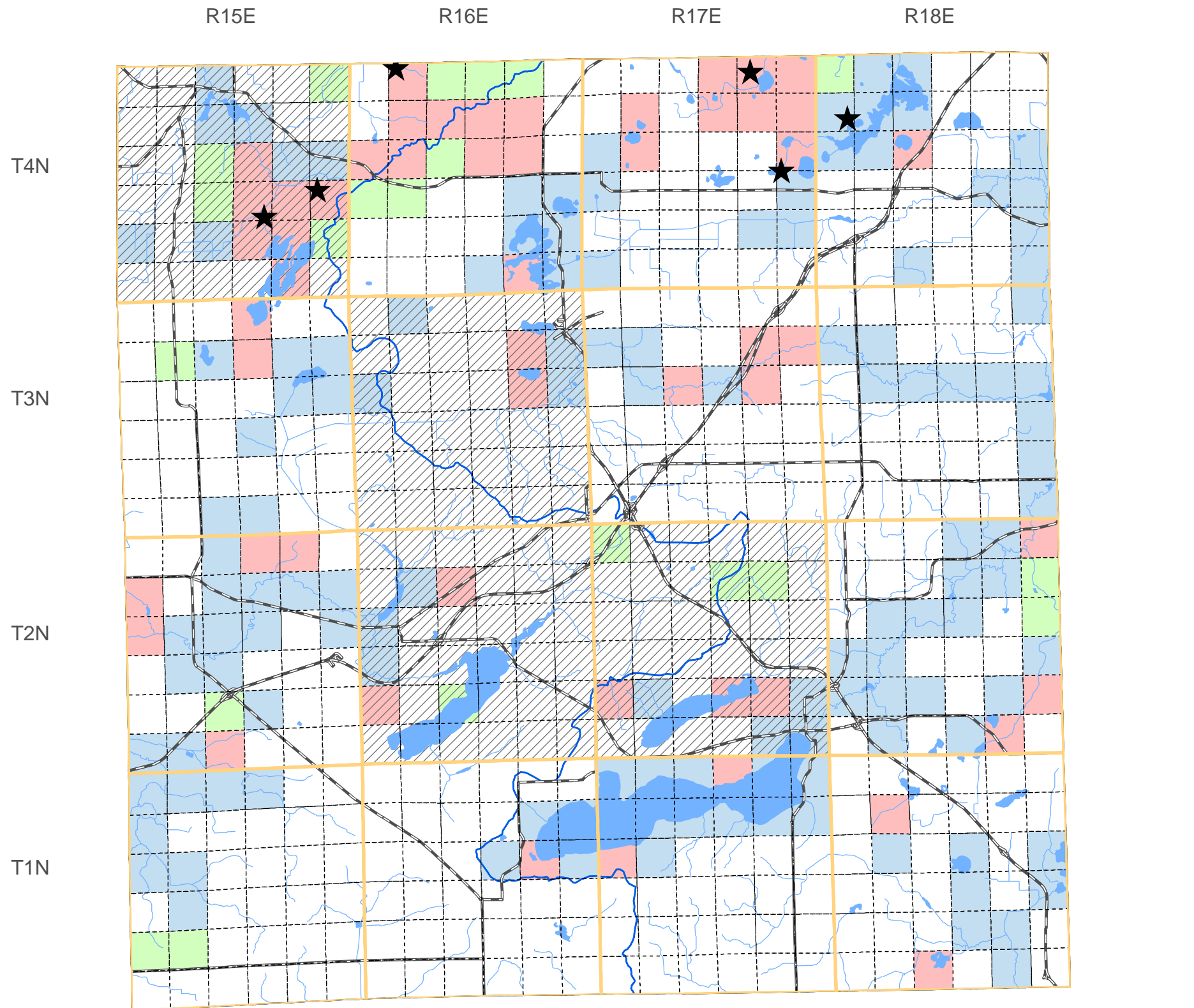
Yellow-breasted Chat, *Icteria virens*, 2008
 Acadian Flycatcher, *Empidonax virens*, 2009
 Bird Rookery, Bird Rookery, 2009
 Herp Hibernaculum, Herp Hibernaculum, 1988
 Hooded Warbler, *Wilsonia citrina*, 2010
 Red-tailed Prairie Leafhopper, *Aftelia rubranura*, 2003
 Cerulean Warbler, *Dendroica cerulea*, 2010

Plants


Pale Green Orchid, *Platanthera flava var. herbiola*, 1914
 Reflexed Trillium, *Trillium recurvatum*, 1999
 Narrow-leaved Verbain, *Verbena simplex*, 1993
 Rock Stitchwort, *Minuartia dawsonensis*, 1973
 Yellow Giant Hyssop, *Agastache nepetoides*, 1995
 Wafer-ash, *Ptelea trifoliata*, 2008
 Yellow Gentian, *Gentiana alba*, 2009
 Swan Sedge, *Carex swanii*, 2002
 Small Skullcap, *Scutellaria parvula var. parvula*, 1991
 Prairie Indian Plantain, *Cacalia tuberosa*, 2009
 Prairie Milkweed, *Asclepias sullivantii*, 2009
 White Camas, *Zigadenus elegans var. glaucus*, 2009
 Purple Meadow-parsnip, *Thaspium trifoliatum var. flavum*, 1936
 Christmas Fern, *Polystichum acrostichoides*, 1931
 Autumn Coral-root, *Corallorhiza odoratior*, 2009
 Woolly Milkweed, *Asclepias lanuginosa*, 1965
 Hairy Wild-petunia, *Ruellia humilis*, 2002
 Upland Boneset, *Eupatorium sessilifolium var. brittonianum*, 1975
 Wild Hyacinth, *Camassia scilloides*, 1994
 Purple Milkweed, *Asclepias purpurascens*, 2009
 Soft-leaf Muhly, *Muhlenbergia richardsonis*, 1992
 Kitten Tails, *Besseyia bullii*, 2009
 Canada Horse-balm, *Collinsonia canadensis*, 1940
 Forked Aster, *Aster furcatus*, 2000
 Innocence, *Houstonia caerulea*, 1951
 Earleaf Foxglove, *Tomanthera auriculata*, 2009

Natural Communities

Oak Opening, Oak opening, 2009
 Southern Dry Forest, Southern dry forest, 2009
 Dry-mesic Prairie, Dry-mesic prairie, 1993
 Dry Prairie, Dry prairie, 2009
 Southern Dry-mesic Forest, Southern dry-mesic forest, 2009
 Mesic Prairie, Mesic prairie, 1992
 Oak Woodland, Oak woodland, 2009
 Southern Mesic Forest, Southern mesic forest, 1989



SPECIES and/or NATURAL COMMUNITY | Aquatic | Terrestrial | Both | Township Occurrences | Watershed Boundaries | State Natural Area



This map represents the known occurrences of rare species and natural communities that have been recorded in the Wisconsin Natural Heritage Inventory (NHI). Colored sections indicate the presence of one or more occurrences within that section. Hatched townships indicate one or more occurrences reported only at the township level. The date following the names above notes the most recent year the occurrence was recorded in the county.

Map generated using NHI data from: 09/15/2010
 Copyright 2003, WDNR-Bureau of Endangered Resources
 This map may not be reproduced without prior written permission.

