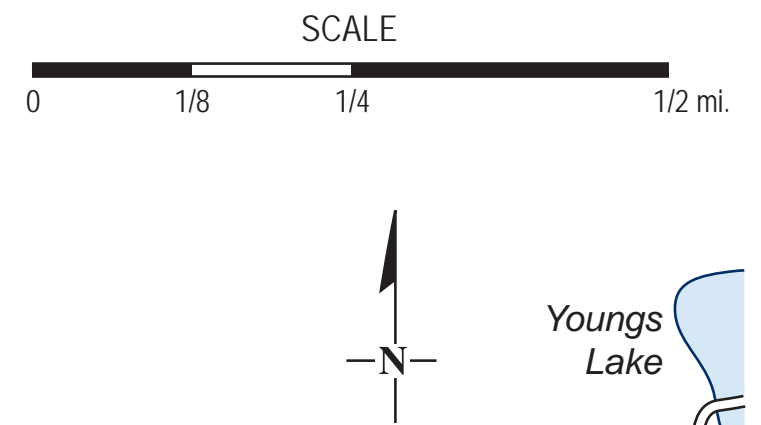


Welcome to Hartman Creek State Park

Winter Use

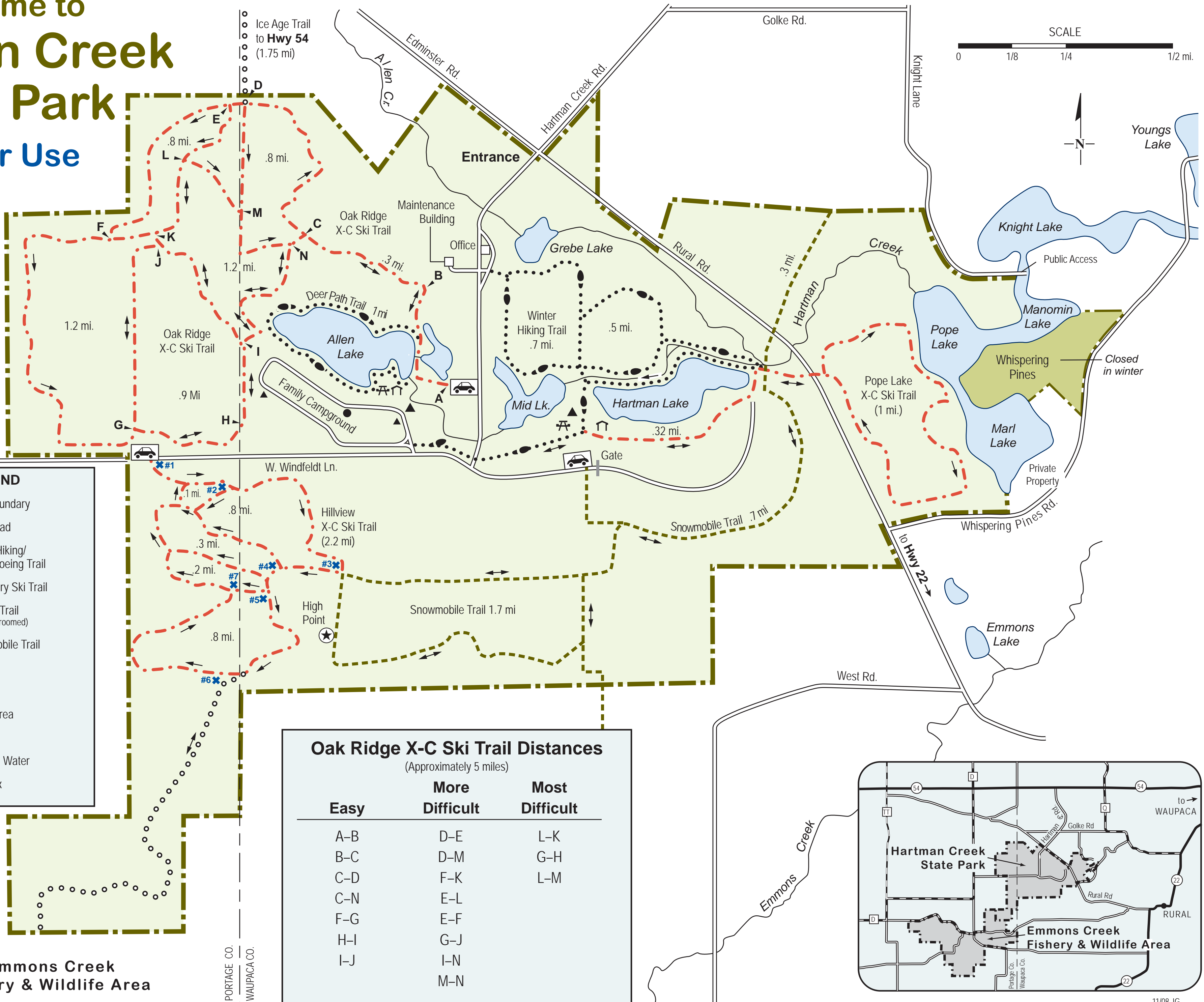


LEGEND

- Park Boundary
- Park Road
- Winter Hiking/Snowshoeing Trail
- X-Country Ski Trail
- Ice Age Trail (X-C/not groomed)
- Snowmobile Trail
- Parking
- Shelter
- Picnic Area
- Toilet
- Drinking Water
- Map box

Oak Ridge X-C Ski Trail Distances
(Approximately 5 miles)

Easy	More Difficult	Most Difficult
A-B	D-E	L-K
B-C	D-M	G-H
C-D	F-K	L-M
F-G	E-L	
H-I	G-J	
I-J	I-N	
	M-N	



Emmons Creek Fishery & Wildlife Area

